

## SERVICE

### 565GK, 565GKM, AND 565GKMS TELEPHONE SETS

### CONNECTIONS

#### 1. GENERAL

**1.01** This section contains information for the 565GK (MD), 565GKM (MD), and 565GKMS telephone sets.

**1.02** This section is reissued to:

- Add information on 565GKMS telephone set, Fig. 2
- Show 3-type speakerphone components MD
- Show 565GKM telephone set MD
- Update information, Fig. 1, 3, and 4
- Change paragraph 2.07 to include lead colors
- Show 533K diode replacing KS-15724L1 diode (Station Busy Lamp circuit), Fig. 3 and 4.

**1.03** The 565GKM modular telephone set is similar to the 565GK except the modular G15A handset with its associated H4DU cord and 616D jack assembly is used in place of the hard wired G3A-type handset.

**1.04** ♦The 565GKMS telephone set is similar to the 565GKM except for a new line switch assembly which breaks both tip and ring sides of the line instead of only the ring side.♦

#### 2. CONNECTIONS

**2.01** These sets are factory-wired for use with 1A1 or 1A2 KTS, 3-type (MD) or 4A

speakerphone, and individual or common line ringer. Hold feature is not provided.

**2.02** All convertible key positions are supplied as pickup keys. To convert from pickup (locking) to signaling (nonlocking), remove the 811218924 (P-12A892) screw detail from key positions involved. Make necessary wiring changes as shown in Table A.

**2.03** When used with 1A KTS, modify set as shown in Fig. 3.

**2.04** ♦These sets are furnished from the factory equipped with H1-type ringer. Provision is also made for the installation of a buzzer which must be ordered separately. Use spare pair and terminals to connect buzzer.♦

**2.05** An 812559623 (P-25E962) auxiliary terminal strip is available for auxiliary services such as buzzers, lamps, etc. It must be ordered separately.

**2.06** A D-179935 Kit of Parts can be installed in the set when the exclusion feature is required. It must be ordered separately.

**2.07** ♦When a 565GK (MD), 565GKM (MD), or 565GKMS telephone set is not used as a speakerphone set and is multiplied with any other set furnishing speakerphone feature, the speakerphone leads must be disconnected, insulated, and stored either at the telephone set or at the multiplying point. If not disconnected, the speakerphone leads will provide a common path between the circuits of the multiplied telephone sets. The leads to be removed are as follows: T1 (V-G), R1 (G-V), P3

#### NOTICE

Not for use or disclosure outside the  
Bell System except under written agreement

(V-BR), P4 (BR-V), AG (V-S), and LK (S-V). Speakerphone connections are shown in Division 512.4

**2.08** For installation of optional items such as exclusion, auxiliary terminal strips etc, and

maintenance information common to 6-button sets refer to Reference section in Division 502.

**2.09** Use an A20B connector cable when speakerphone and exclusion features are not provided.

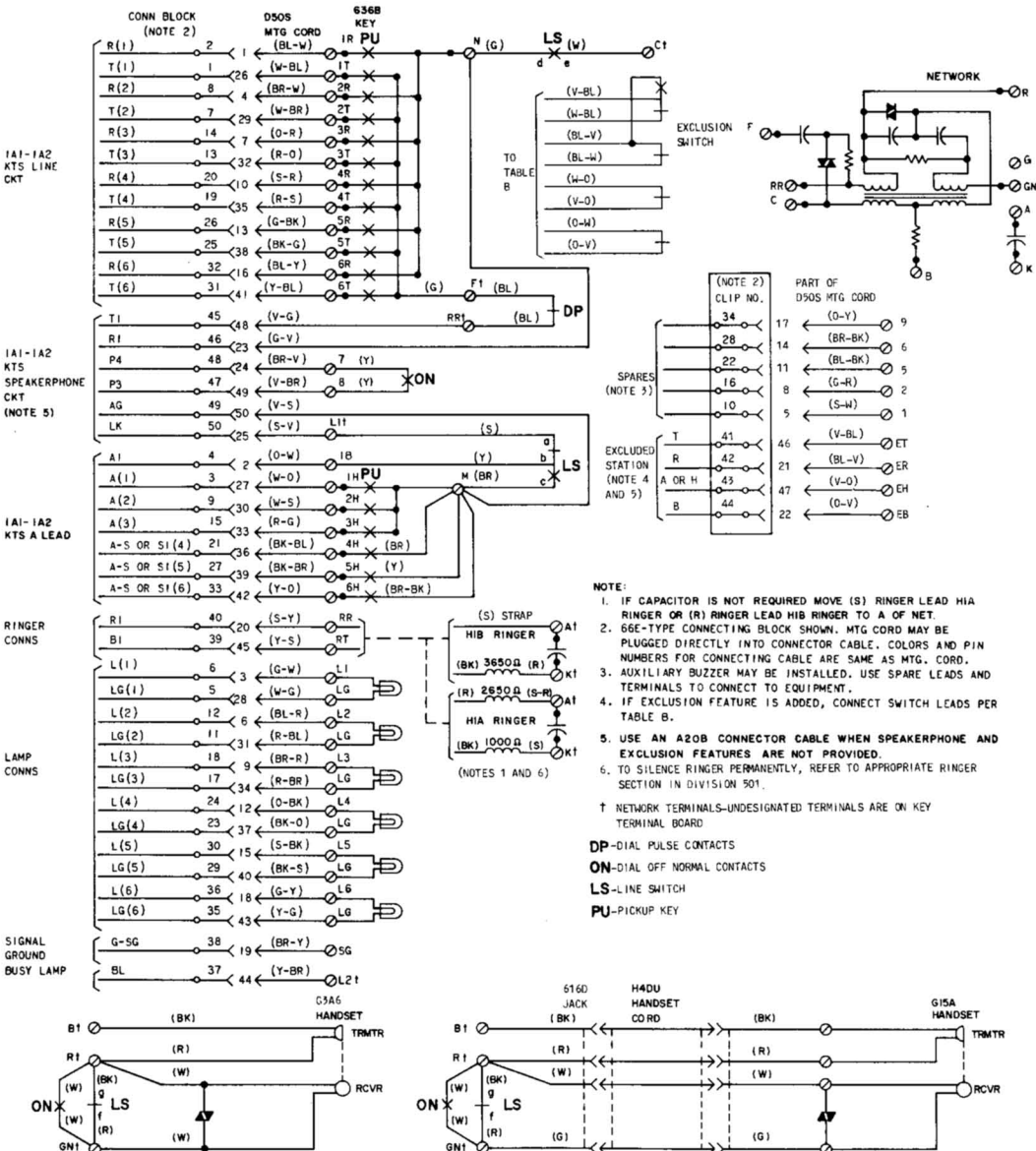
**TABLE A**  
**PICKUP-SIGNAL KEY CONVERSION**

KEY TEL SET	CONVERSION OPTIONS (NOTE)	636B KEY LEADS		
		(BR)	(Y)	(BR-BK)
565GK (MD), 565GKM (MD), or 565GKMS	PPPPPP	M	M	M
	PPPPPS	M	M	SG
	PPPPSS	M	SG	SG
	PPSSSS	SG	SG	SG
	PPPPP*S*	M	6H	†
	PPPP*P*S*	6H	6H	†

**Note:** To convert from pickup (locking) to signal (nonlocking), remove 811218924 (P-12A892) screw from the plunger at key position being converted.

\* These arrangements use line switch controlled ground for common signal key used with private or intercommunicating lines. Common signal should be used to operate a common signal relay. Do not wire directly to a buzzer.

† Connect with the (BR) line switch lead using the terminal shown for proper option and KTS required.



**Fig. 1—565GK (MD) and 565GKM (MD) Telephone Set, Connections**



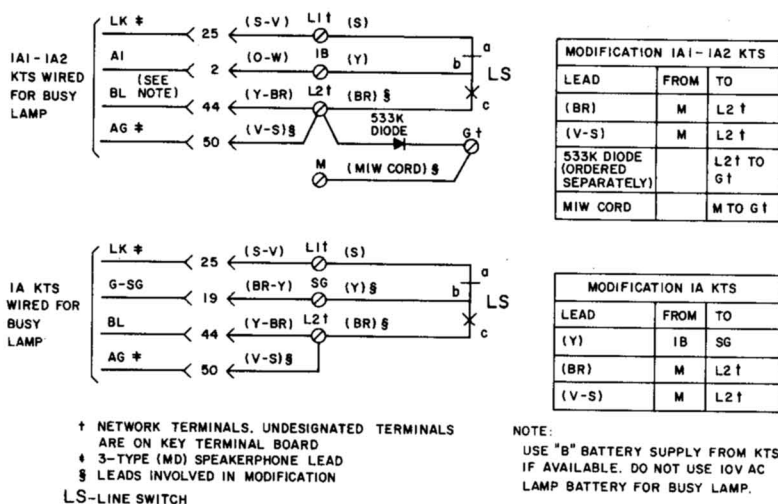


Fig. 3—Station Busy Lamp Circuit with 3-Type (MD) Speakerphone

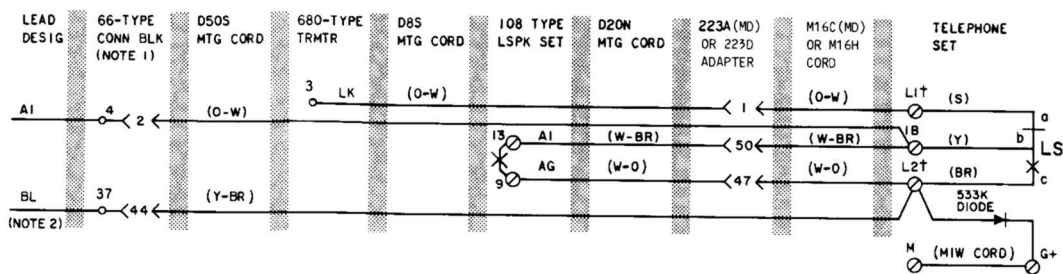
TABLE B  
EXCLUSION KEY CONNECTIONS

EXCLUSION	KEY TEL SYS	EXCLUSION KEY LEADS							
		BL-W	W-BL	O-W	W-O	BL-V	V-BL	O-V	V-O
On any line	1A	R*	T*	1B†	H*	ER	ET	EB	EH
	1A1 or 1A2	R*	T*	EB	H*	ER	ET	EB	EH

\* Terminal of line involved.

† When other than line 1 is excluded on 1A KTS, disconnect, insulate, and store O-W mounting cord conductor from terminal 1B; connect balance lead conductor from line involved to 1B.

**Note:** If exclusion feature is used, remove all B leads except one being used from key terminal board; insulate and store.

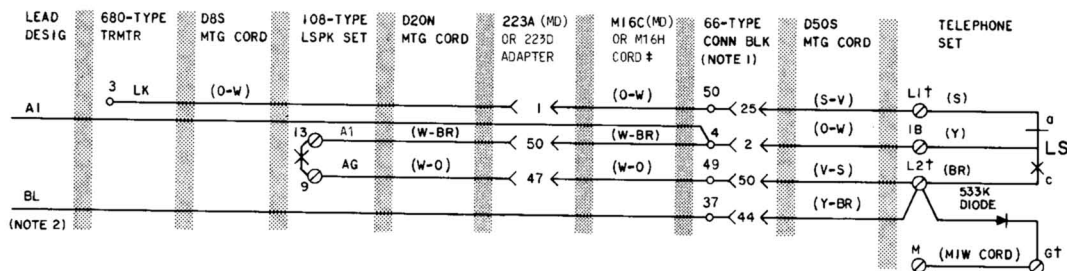


MODIFICATION 1A1-1A2 KTS		
LEAD	FROM	TO
(BR)	M	L2†
(W-O)	M	L2†
533K DIODE (ORDERED SEPARATELY)		L2† TO G†
MW CORD		M TO G†
(S-V)	L1†	*
(V-S)	M	*

NOTES:

1. 66-TYPE CONNECTING BLOCK SHOWN. MTG CORD MAY BE PLUGGED DIRECTLY INTO CONNECTOR CABLE. COLORS AND PIN NUMBERS FOR CONNECTOR CABLE ARE SAME AS MTG CORD.
2. USE "B" BATTERY SUPPLY FROM KTS IF AVAILABLE. DO NOT USE 10V AC LAMP BATTERY FOR BUSY LAMP

A. 1A1-1A2 KTS WIRED FOR BUSY LAMP WITH M16C (MD) OR M16H CORD TERMINATED IN TEL SET



MODIFICATION 1A1-1A2 KTS		
LEAD	FROM	TO
(BR)	M	L2†
(V-S)	M	L2†
533K DIODE (ORDERED SEPARATELY)		L2† TO G†
MIW CORD		M TO G†

\* INSULATE AND STORE

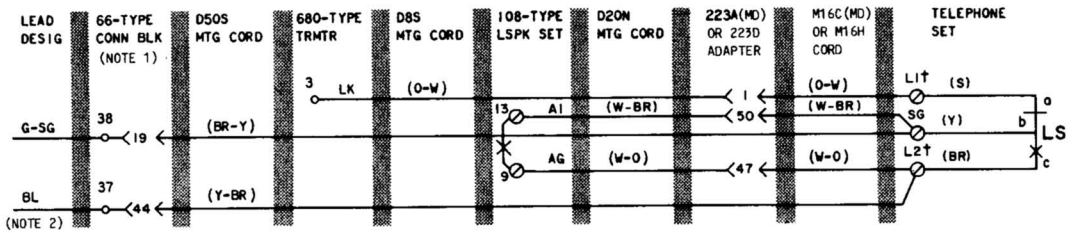
NETWORK TERMINAL-UNDESIGNATED TERMINALS  
ARE ON KEY TERMINAL BOARD

‡ 161A ADAPTERS REQUIRED TO CONNECT M16C (MD) OR M16H  
CORD AT 66-TYPE CONN BLK

LS LINE SWITCH

**B.** 1A1-1A2 KTS WIRED FOR BUSY LAMP WITH M16C (MC) OR M16H CORD TERMINATED AT 66-TYPE CONN BLK

**Fig. 4—Station Busy Lamp Circuit with 4A Speakerphone (Sheet 1 of 2)**

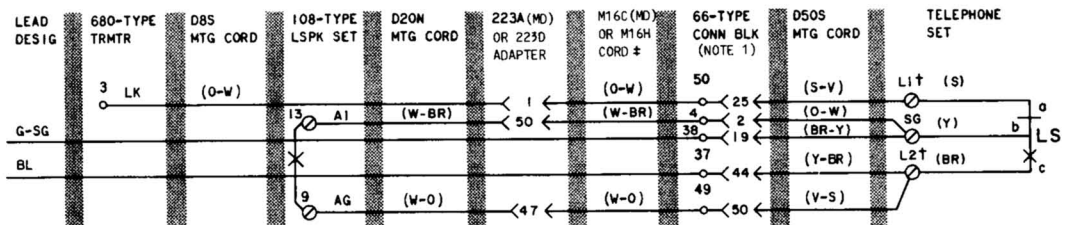


MODIFICATION 1A KTS		
LEAD	FROM	TO
(Y)	IB	SG
(BR)	M	L2†
(W-O)	M	L2†
(S-V)	L1†	*
(V-S)	M	*
(W-BR)	IB	SG

## NOTES:

- 66-TYPE CONNECTING BLOCK SHOWN. MTG CORD MAY BE PLUGGED DIRECTLY INTO CONNECTOR CABLE. COLORS AND PIN NUMBERS FOR CONNECTOR CABLE ARE SAME AS MTG CORD.
- USE "B" BATTERY SUPPLY FROM KTS IF AVAILABLE. DO NOT USE 10V AC LAMP BATTERY FOR BUSY LAMP.

A. 1A KTS WIRED FOR BUSY LAMP WITH M16C (MD) OR M16H CORD TERMINATED IN TEL SET



MODIFICATION 1A KTS		
LEAD	FROM	TO
(Y)	IB	SG
(BR)	M	L2†
(V-S)	M	L2†
(O-W)	IB	SG

\* INSULATE AND STORE

† NETWORK TERMINAL-UNDESIGNATED TERMINALS ARE ON KEY TERMINAL BOARD

‡ 161A ADAPTERS REQUIRED TO CONNECT M16C CORD AT 66-TYPE CONN BLK

LS LINE SWITCH

B. 1A KTS WIRED FOR BUSY LAMP WITH M16C (MD) OR M16H CORD TERMINATED AT 66-TYPE CONN BLK

Fig. 4—Station Busy Lamp Circuit with 4A Speakerphone (Sheet 2 of 2)¶