

CONNECTING BLOCKS

66E3-25, 66E4-25, AND 66E8-25

IDENTIFICATION AND INSTALLATION

1. GENERAL

1.01 This section provides identification, ordering, and installation information for the 66E3-25, 66E4-25, and 66E8-25 connecting blocks.

1.02 This section is reissued to:

- Add information on 66E8-25 connecting block
- Add new Fig. 3, 6, and 7.

1.03 Refer to the following sections for related information on connecting blocks:

- 461-600-101—Designation Strips and Methods of Marking
- 461-604-100—Connecting Blocks, 66-Type; Tools, Terminating, Adapters, and Maintenance
- 461-604-101—Connecting Blocks, 66-Type; Numbering, Wiring Plan, and Distribution Terminal Arrangements.

1.04 For information on the 152A adapter, which may be used in mounting a 66E3-25 connecting block, refer to Section 461-200-103.

2. IDENTIFICATION

Description

2.01 The 66E3-25 and 66E4-25 connecting blocks each consist of fifty 2-terminal connectors inserted in a molded plastic block and factory-wired to a 50-contact connector.

2.02 ♦The 66E8-25 connecting block consists of fifty 2-terminal connectors inserted in a molded plastic block and factory-wired to two 50-conductor plug-ended stub cables. The 66E8-25

also has two double screw terminals for use as tie points for spade-ended leads from adjuncts. These screw terminals have no electrical connection to the 66-type connecting block and may be used only as tie points (eg, furnishing power to an adjunct such as Hands-Free Answering on Intercom (HFAI)).♦

Application

2.03 The 66E3-25 connecting block (Fig. 1) is equipped with a molded plastic housing incorporating a snap-on cover and a cable trough in the base. The block should be mounted on a firm flat surface. Provisions are also made for mounting the block to a standard wall outlet box or overfloor duct by using a 152A adapter.



DO NOT use the 152A adapter as a substitute for underfloor duct service fittings.

2.04 The 66E4-25 connecting block (Fig. 2) is equipped with a molded plastic base without cable trough or cover; it incorporates a mounting bracket which allows mounting in commercial type underfloor duct service fittings. ♦Cover for 66E4-25 connecting block must be furnished by customer and should be similar to that shown in Fig. 5.♦

2.05 ♦The 66E8-25 connecting block (Fig. 3) is equipped with a molded plastic base and provides full access to the 50 conductors of the connector cable and mounting cord supplying a telephone set. The connecting block can also be used to gain access to the leads in one finger of larger connector cables and mounting cords such as those for CALL DIRECTORS®. Primary use of the 66E8-25 connecting block is with the 2A transmitter-receiver used to supply HFAI in the 1A1 or 1A2 Key Telephone System.♦

NOTICE

Not for use or disclosure outside the
Bell System except under written agreement

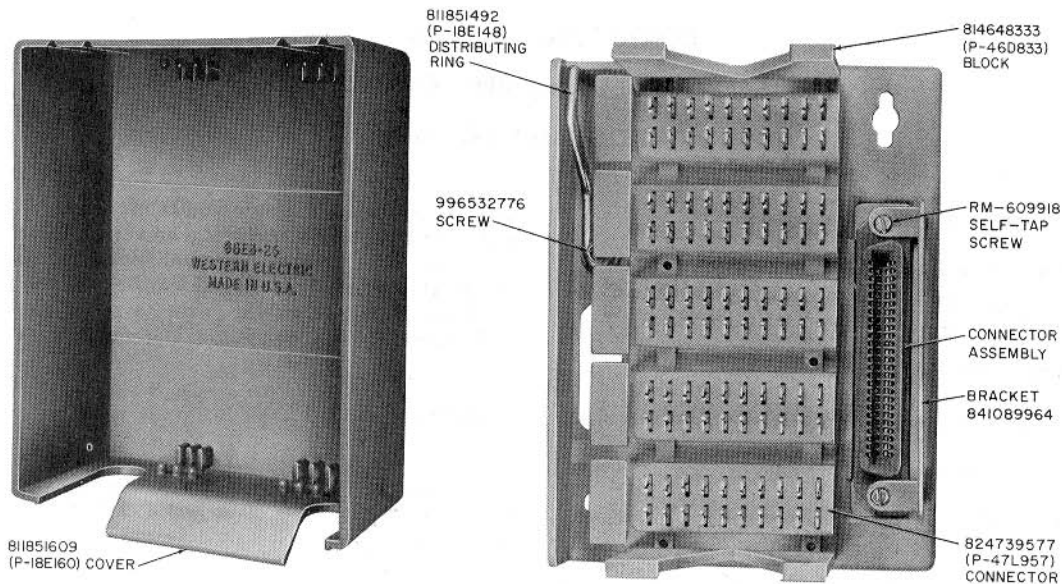


Fig. 1—66E3-25 Connecting Block

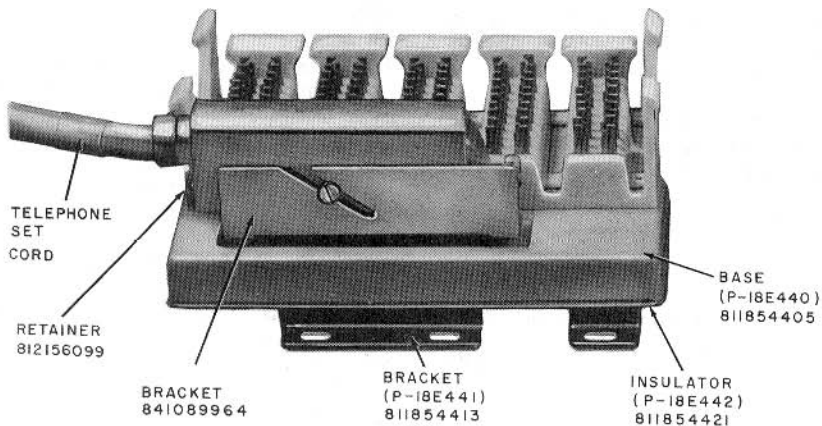


Fig. 2—66E4-25 Connecting Block

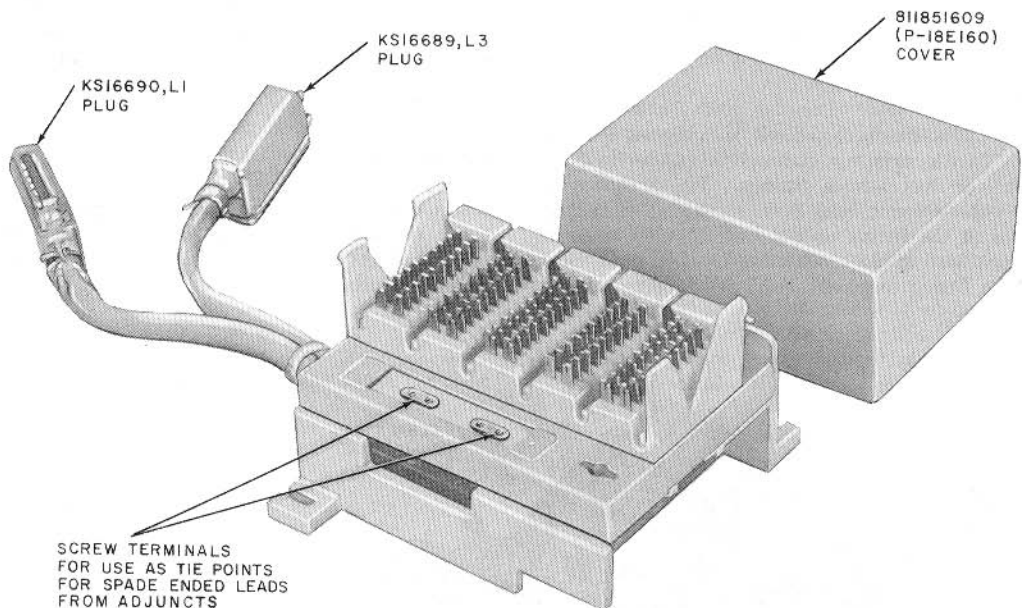


Fig. 3—66E8-25 Connecting Block

2.06 A new bracket design has been incorporated on the 66E3-25 and 66E4-25 connecting blocks for attaching both the low and high silhouette plug or connectors. The new bracket 841089964 (Fig. 1), which contains a diagonal slot, replaces the present P-21E608 bracket. The new slot provides improved retention of the connector and plug to eliminate accidental disengagement resulting from external movement of the cord or connector cable.

Ordering

2.07 ♦Order as follows:

- Block, Connecting, 66E3-25 (equipped with cover); see Note
- Block, Connecting, 66E4-25 (not equipped with cover—see 2.04); see Note

Note: One 834061111 (P-40W111) retainer and screw are shipped loose with each 66E3 and 66E4 connecting block.

- Block Connecting, 66E8-25 (equipped with cover)
- Bracket, 841089964 (see 2.08).♦

2.08 The new bracket (841089964) may be ordered as a piecepart to replace the present bracket (P-21E608) on older connecting blocks presently in use. All new 66E3-25 and 66E4-25 connecting blocks come equipped with the new retainer bracket.

3. INSTALLATION

3.01 For mounting instructions, refer to sections covering installation of cable terminal boxes for inside wiring.

66E3-25

3.02 Install the 152A adapter on electrical outlet box or overfloor duct and mount the 66E3-25 connecting block to the adapter, using the mounting hardware provided (Fig. 4). Terminate the cable conductors ♦on the connecting block pins (Fig. 6),

connect station telephone set to connector assembly, and install snap-on cover.

66E4-25

3.03 This connecting block is designed for use with existing commercial underfloor or overfloor duct service fittings. Fig. 5 shows its use with a commercial service fitting. If tapped holes in the fitting do not line up with holes in the connecting block mounting bracket, drill holes in the fitting to accept No. 8 self-tapping screws.

♦Terminate the cable conductors on the connecting block pins (Fig. 6), connect station telephone set to connector assembly, and install commercial service fitting.♦

66E3-25 and 66E4-25

3.04 Elongated mounting holes are provided in the 66E3-25 and 66E4-25 connecting blocks so that slight adjustment of position is possible during installation.

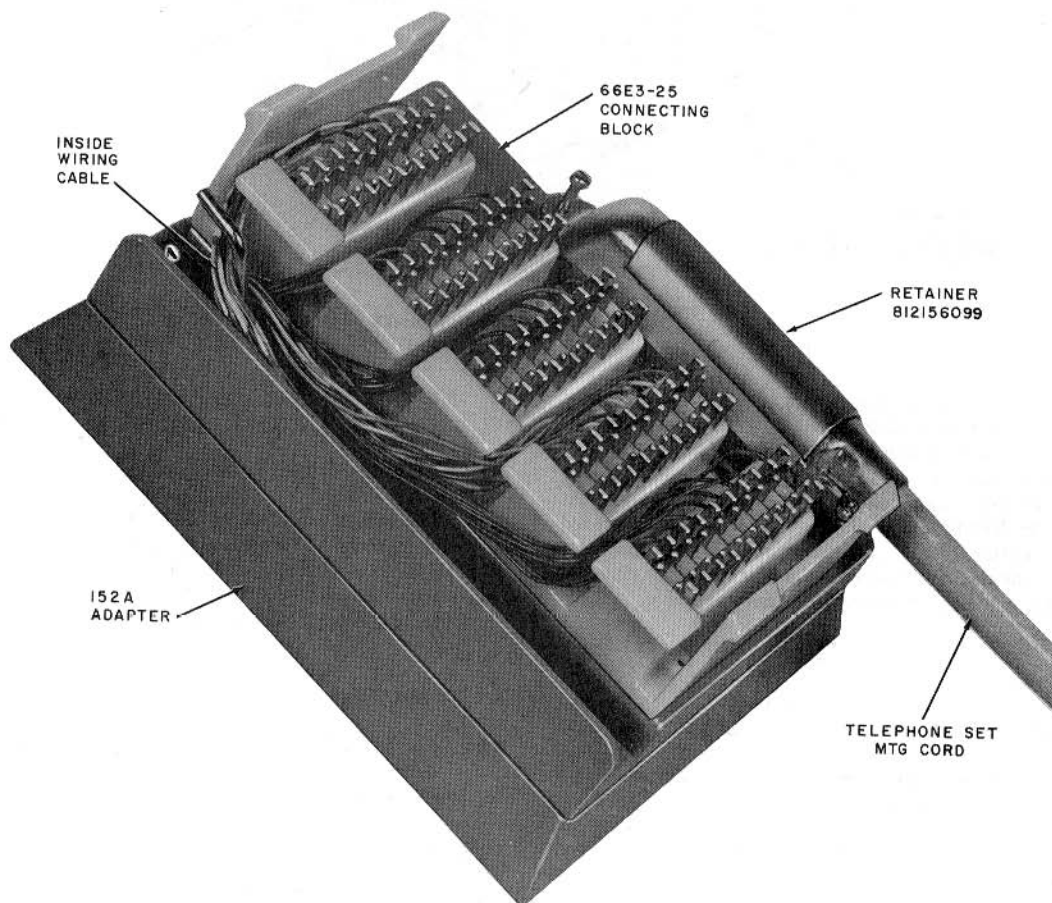


Fig. 4—66E3-25 Connecting Block Installed on 152A Mounting Adapter

3.05 On 66E3-25 and 66E4-25 connecting blocks, field replacement of the old retainer bracket (P-21E608) with the new retainer bracket (841089964) can be accomplished by removing two easily accessible RM-609918 button-head self-tapping screws (Fig. 1), removing the old bracket, installing the new bracket, and replacing the two screws. Attach retainer to bracket with 824634729 (P-46L472) RD washerhead screw.

66E8-25

3.06 Install the 66E8-25 as follows:

- (a) Mount 66E8-25 connecting block on flat vertical surface.

- (b) Connect station telephone set mounting cord to the stub cable equipped with KS-16690, L1 plug and secure in place.

- (c) Connect A25B connector cable to stub cable equipped with KS-16689, L3 plug and secure in place.

- (d) Terminate adjunct cord on terminals of connecting block using 161A adapters. Refer to Fig. 7 for block numbering and wiring.

- (e) When adjunct is equipped with spade-tipped leads for power, tie spade tips of adjunct and leads from power source together, using screw terminals of 66E8-25 connecting block (Fig. 7).

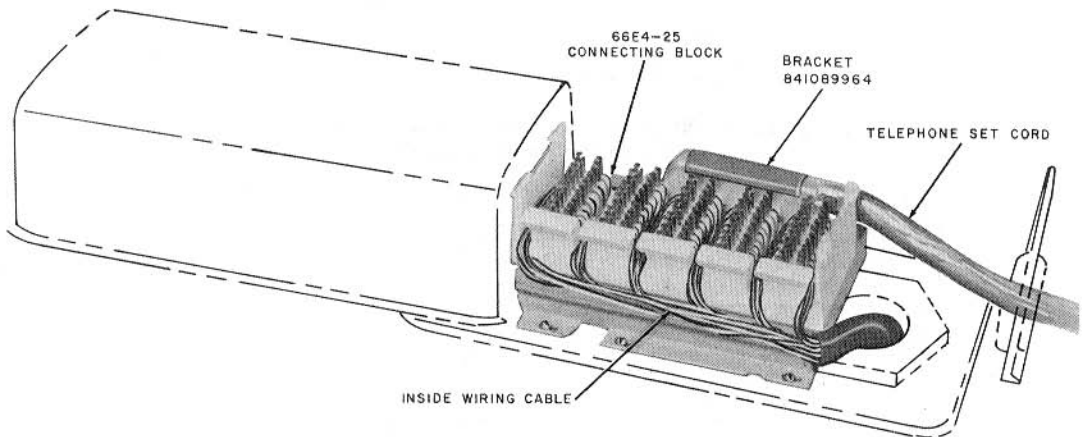


Fig. 5—66E4-25 Connecting Block Installed in Commercial Fitting

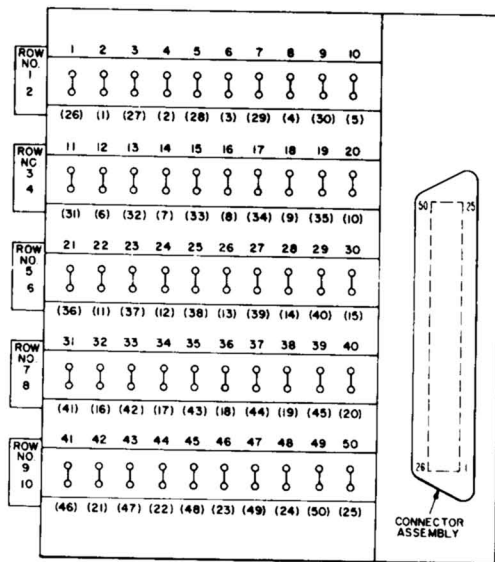


Fig. 6—Numbering and Wiring Plan for 66E3-25 and 66E4-25 Connecting Block

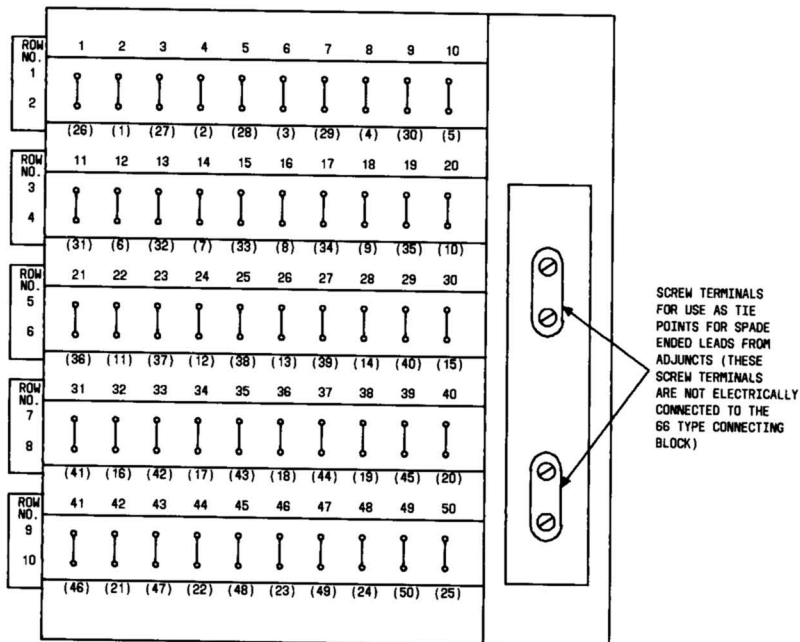


Fig. 7—Numbering and Wiring Plan for 66E8-25 Connecting Block