

PUBLIC TELEPHONE SIGNS

REFLECTORIZED TYPES

INSTALLATION

1.00 INTRODUCTION

Information in this section was formerly in Section C39.713, Issue 1, entitled Public Telephone Signs, Installation.

2.00 SIGN, WARNING, ADVANCE, KS-16540

2.01 The location for the KS-16540 sign should conform with local highway regulations. Maximum visibility from the greatest distance should be provided for the approaching motorist. (See Fig. 1 and 2.)

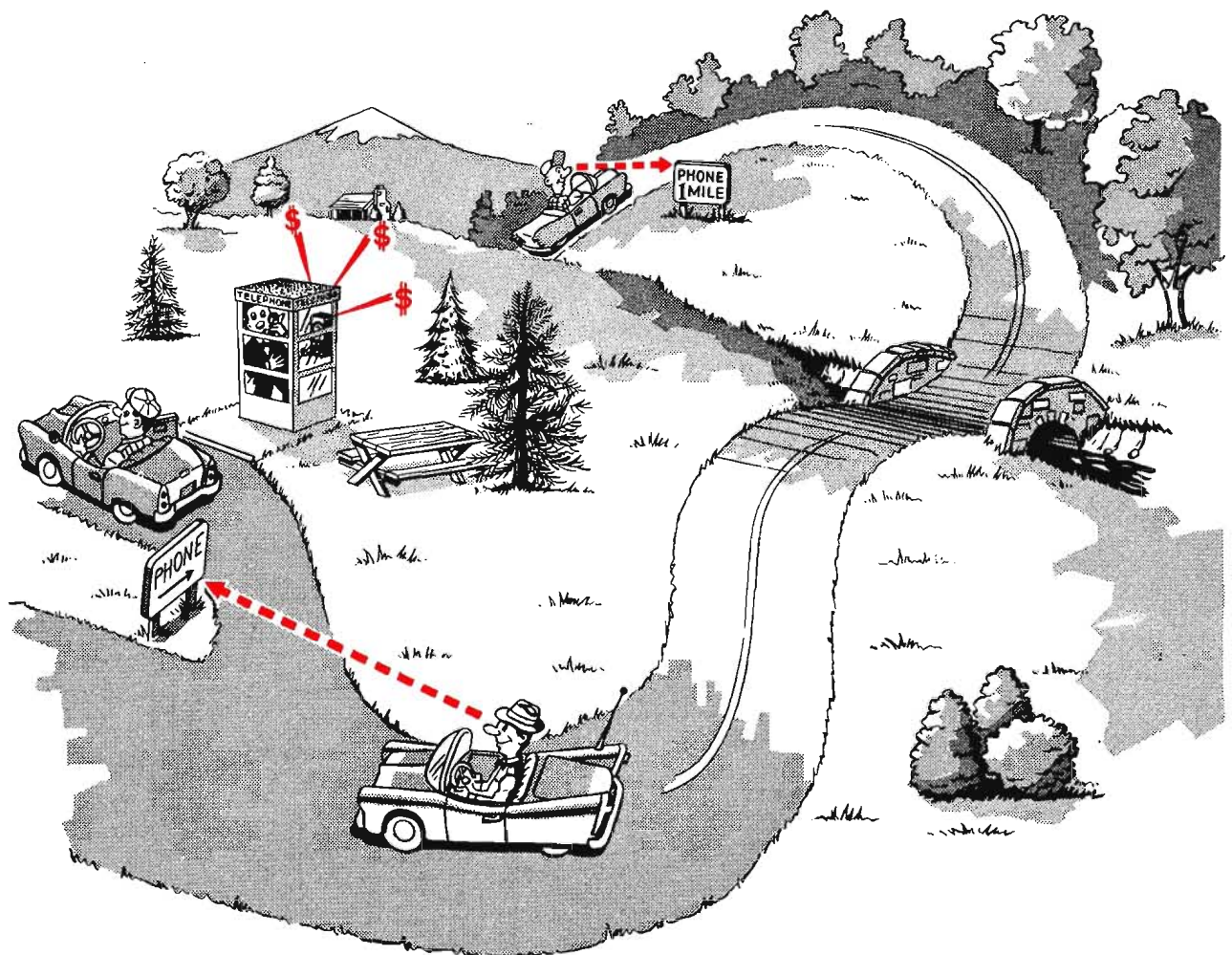
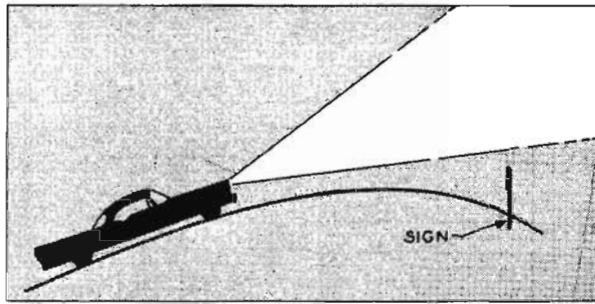
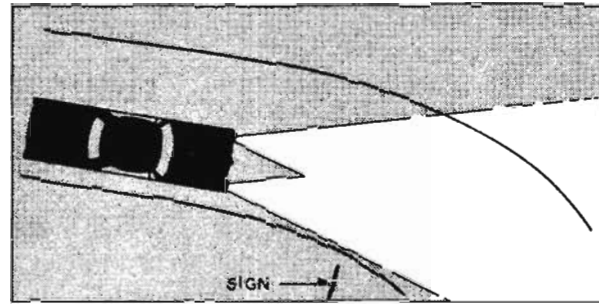


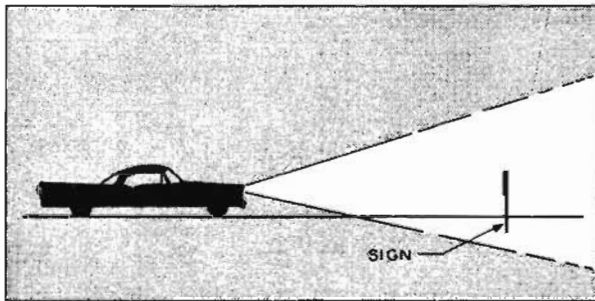
Fig. 1 — Sign KS-16540, Lists 1 and 3



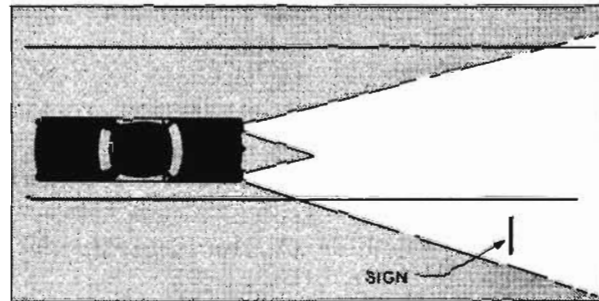
WRONG



WRONG



RIGHT



RIGHT

Fig. 2 — Selection of Location for KS-16540 Sign

2.02 The KS-16540 sign is equipped with mounting screws, nuts, and washers. Two mounting posts must be ordered for each sign. These posts are available in lengths of 9 and 11 feet. A KS-16540, List 1 installation is shown in Fig. 3.

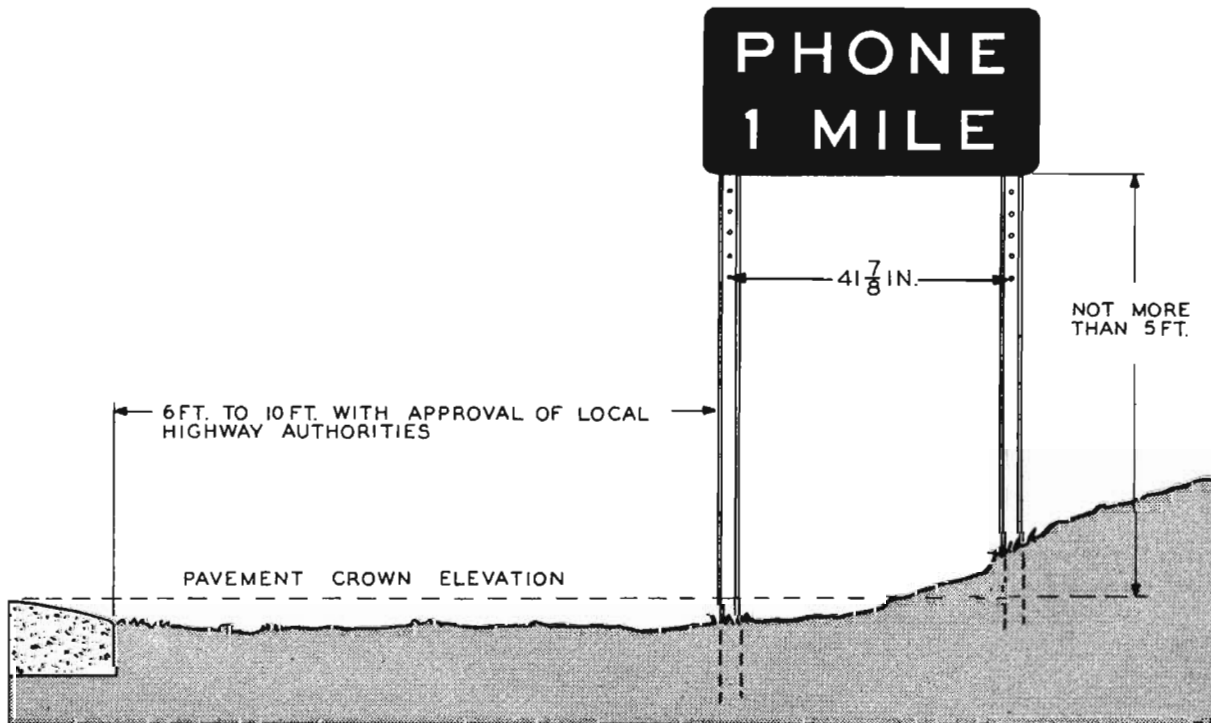


Fig. 3 — KS-16540, List 1 Installation

2.03 The required length of the mounting posts and the depth to which they shall be driven will vary with local soil conditions. The posts should be driven to depth sufficient to hold sign rigidly at an angle which provides maximum visibility. This usually is at right angles to the traffic.

2.04 When excessive glare from the face of the sign affects its legibility, turn sign slightly away from road as shown in Fig. 4.

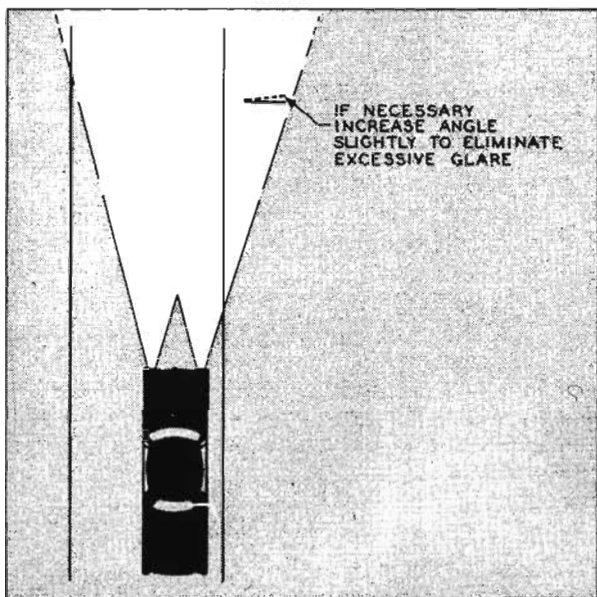


Fig. 4 — Locating Sign to Reduce Glare

3.00 SIGNS, DRIVE-UP, WALK-UP — KS-16705-TYPES

3.01 The KS-16705-type signs are used at drive-up, walk up public telephone locations. To mount these signs, a KS-16705, List 70 mast is required. The list 70 mast includes the following:

- 1 Steel pipe, 2 inches by 63 inches
- 1 Cap
- 1 Reducer, 3 inches to 2 inches
- 2 Steel hex head cap screws, 5/16-18 by 3 inches

- 2 Steel hex head cap screws, 5/16-18 by 1 inch
- 4 Steel lockwashers
- 8 Phenol fiber flat washers
- 4 Steel hex nuts, 5/16-18

3.02 Fig. 5 shows a KS-16705, List 50 sign installation. The list 50 sign is normally used at walk-up locations. The list 51 sign is used at drive-up locations. At these locations two signs bolted back-to-back are required. The 3-inch hex head screws are used to secure the sign to the pipe.



Fig. 5 — Sign KS-16705, List 50 Mounted on List 70 Mast

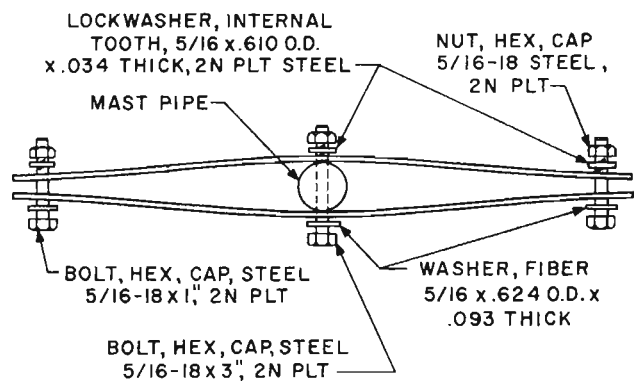


Fig. 6 — Method of Attaching KS-16705-Type Signs to List 70 Mast

3.03 The 1-inch hex head screws are used to bolt the signs together at each corner as shown in Fig. 6.

3.04 These signs may be mounted directly to a building surface. When mounting sign on such surfaces, use four fasteners of sufficient length to hold sign rigidly in place.