

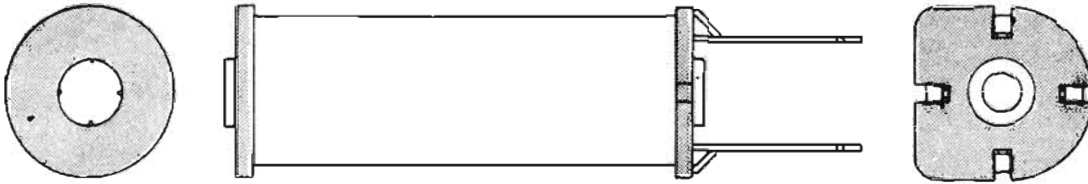
FEBRUARY 1981



# SAGE INCORPORATED®

THE PRICE OF SAGE IS YOUR BEST INVESTMENT IN THE FUTURE OF YOUR BUSINESS AND EQUIPMENT

# COILS



COIL

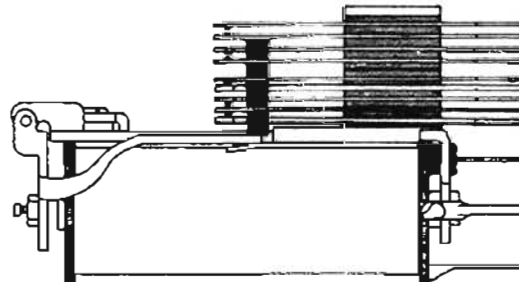
Catalog Number	Mfgr's Number	Descriptive Data	Each 1-49	Each 50-99	Each 100+
144-1005	D-280026-B	Iron Core	8.22	7.72	7.15
102-1011	D-280028-B	Iron Core	7.77	7.30	6.76
102-1025	D-280184-A	Iron Core	16.21	15.22	14.10
102-1031	D-280219-B	Iron Core	7.60	7.13	6.61
102-1046	D-280321-B	Iron Core	11.62	10.91	10.11
102-1130	D-281455-A	Iron Core	13.08	12.29	11.38
102-1135	D-281462-B	Iron Core	8.92	8.38	7.76
102-1140	D-281530-A	Iron Core	4.47	4.20	3.89
102-1146	D-281548-B	Iron Core	8.45	7.93	7.35
102-1175	D-281909-B	Iron Core	10.52	9.88	9.15
102-1200	D-282170-B	Iron Core	12.92	12.13	11.24
102-1221	D-282349-B	Iron Core	8.18	7.68	7.12
102-1290	D-283242-B	Iron Core	14.15	13.29	12.31
102-1331	D-283998-B	Iron Core	10.55	9.90	9.17
102-1391	D-284314-B	Iron Core	9.07	8.52	7.89

# RELAYS

In the "combination" column, the letters A,B,C,D, and E also refer to the combinations for each assembly. These letters are coded as follows:

- A—Make
- B—Break
- C—Break—Make
- D—Make before/Break
- D—Break—Make before Break

Relay Pile-ups are also available.



## RELAYS

Catalog Number	Mfgr's Number	Lt.	Combinations Rt.	Each 1-49	Each 50-99	Each 100 +
103-1025	D-555182-A		C/A/A	18.69	17.56	16.26
103-1030	D-555188-A		A/B/B/A	18.52	17.39	16.11
103-1045	D-812268-A		A/B/C/C	19.40	18.21	16.87
103-1050	D-812271-A		B/A/A/D	19.40	18.21	16.87
103-1055	D-812306-A		A/A/B/C/A	19.17	18.00	16.67
103-1065	D-812330-A		A/E/C/C	17.89	16.62	15.39
103-1095	D-812356-A		B/C/C/A	26.35	24.75	22.92
103-1155	GR-3822-A2		A/A/A/D	35.44	33.28	30.82
103-1175	GR-44-K6		A	21.48	20.17	18.68
103-1210	GR-5003-D3	C		16.33	15.33	14.20
103-1215	GR-5007-A4C	A/A		13.89	13.05	12.08
103-1230	GR-7304-A4		A/A	28.24	26.52	24.56
103-1310	GR-5029-F7	D		15.59	14.64	13.58
103-1340	GR-5032-B1C		C/A/A	18.15	17.05	15.79
103-1345	GR-5032-J1		C/A/A	20.87	19.60	18.15
103-1395	GR-5102-A7		C/A/D/D	23.31	21.89	20.27
103-1400	GR-5111-C5	B/D		24.21	22.74	21.06
103-1420	GR-5134-A1		B/C/C/C/A	16.99	15.96	14.78
103-1460	GR-5220-D7		C/C/C	29.91	28.09	26.01
103-1505	GR-5488-A8		A/B/B	14.20	13.33	12.35
103-1600	GR-60133-A1	C/C/A/A/A	C/C/C/C	43.87	41.20	38.15
103-1605	GR-60142-A3	C/C/A/A	B/B/A/A/A	40.98	38.49	35.64
103-1635	GR-60216-A1	B/C/C/A	C/C/C/A	39.98	37.55	34.77
103-1705	GR-60388-A1	B/C/C/A/A	B/C/C/A	40.65	38.17	35.35
103-1800	GR-6177-A3	C		13.20	12.40	11.48
103-1810	GR-6177-A9	C		14.09	13.23	12.25
103-1815	GR-6177-B1A	C		14.51	13.62	12.62
103-1845	GR-6181-B8	C/A		15.67	14.72	13.63
103-1870	GR-6251-A6	C/D		19.25	18.07	16.74
103-1910	GR-6335-A4	B/C/A/D		33.12	31.10	28.80
103-1920	GR-6342-A1	B/C/A/A/A	A/B/B/A/A	32.67	30.88	28.41
103-1950	GR-6393-A2A	E/B/A		19.63	18.43	17.07
103-1960	GR-6407-A7	C/C/B		31.68	29.75	27.55
103-1970	GR-6479-A2	B/C/A/A		28.24	26.52	24.56
103-1985	GR-6493-A1C	B/B/C/A		29.46	27.66	25.62
103-2005	GR-6533-A1	E/B/A/A		28.17	26.46	24.50
103-2031	GR-6685-A1B	C/B/A/A		20.82	19.55	18.11
103-2055	GR-6787-A1	A/A		19.84	18.64	17.26
103-2090	GR-6883-A1	B/D		22.25	20.89	19.35
103-2106	GR-6974-A30		A/C/C/C/B	35.96	33.77	31.27
103-2145	GR-7304-A4		A/E/C/C	31.82	29.88	27.67
103-2165	GR-7920-A1B		B/C/A/A	30.34	28.50	26.39
103-2175	GR-7936-A2B		C/A/A/A	21.96	20.62	19.10
103-2225	GR-8018-A2A		C/C/A/A	31.23	29.33	27.16
103-2250	GR-8060-A3		C/C/A/D	33.23	31.21	28.90
103-2285	GR-8082-A2B		C/A/A/A/A	23.43	22.01	20.38
103-2365	GR-8562-A2		B/A/A/A/D	23.35	21.93	20.31
103-2400	GR-8668-A1B		C/A/A/A/A/A	26.23	24.63	22.81
103-2420	GR-5134-A1		B/C/C/C/A	16.99	15.96	14.78
103-2435	GR-9000-A5A		B/B/A/A/A/A	32.23	30.27	28.03
103-2440	GR-9034-A2	B/C/A/A	A/B/B/D	41.10	38.59	35.74
103-2470	GR-9414-A8	C/A/A/A	B/B/A/A	38.32	35.99	33.33
103-2475	GR-9416-A4	C/A/A/A/A	B/C/A/A/A/A	44.97	42.23	39.11
103-2505	GR-9830-A1		A/A/C/B/B	29.46	27.66	25.62
103-2510	GR-9920-A1		A/A/B/C/A	29.46	27.66	25.62
103-2520	GR-9962-A1	C/A/A/A	C/C/C	39.21	36.82	34.10

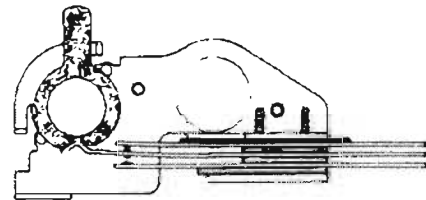
# SPRING ASSEMBLY

In the "combination" column, the letters A,B,C,D, and E also refer to the combinations for each assembly. These letters are coded as follows:

- A—Make
- B—Break
- C—Break—Make
- D—Made before Break
- E—Break—Make before Break

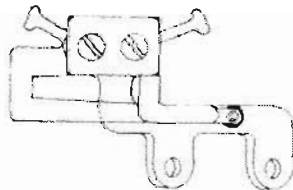
Spring Assembly Pile-Ups are also available.

Catalog Number	Mfgr's Number	Combination	Each 1-49	Each 50-99	Each 100 +
108-1045	D-320298-A	C	7.46	7.00	6.49
108-1080	D-320311-A	B/B	6.02	5.65	5.24
108-1070	D-320305-A	E	9.23	8.67	8.03
108-1075	D-320308-A	B/C	8.01	7.52	6.97
108-1085	D-320313-A	C/C	14.28	13.41	12.42



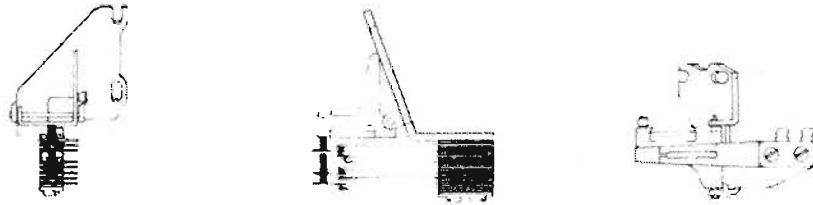
## BUSY KEY ASSEMBLY

Catalog Number	Mfgr's Number	Combination	Each 1-49	Each 50-99	Each 100 +
108-1185	D-735004-A	B/D	8.23	7.73	7.16
108-1190	D-735022-A	A	6.04	5.68	5.26



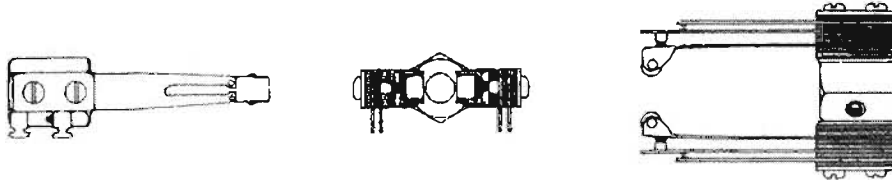
## CAM SPRING ASSEMBLY

Catalog Number	Mfgr's Number	Combination	Each 1-49	Each 50-99	Each 100 +
108-1495	NP-5-A3	CIC/A	21.80	20.47	18.96



### ROTARY OFF NORMAL SPRING ASSEMBLY

Catalog Number	Mfgr's Number	Combinations		Each 1-49	Each 50-99	Each 100 +
		Lt.	Rt.			
108-1465	NP-1-C6	C	A	8.92	8.38	7.76
108-1455	NP-1-B9	A/A	A	27.22	25.56	23.67
108-1490	NP-3-B1	A	A	24.40	22.91	21.22



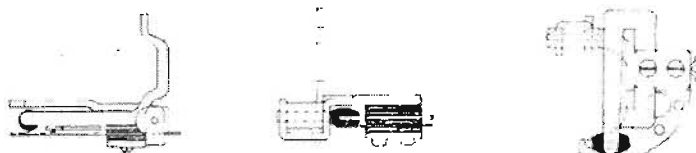
### NORMAL POST SPRING ASSEMBLY

Catalog Number	Mfgr's Number	Combination	Each 1-49	Each 50-99	Each 100 +
108-1180	D-730710-A	B/D	8.69	8.16	7.56
108-1225	D-735105-A	C	6.45	6.05	5.61



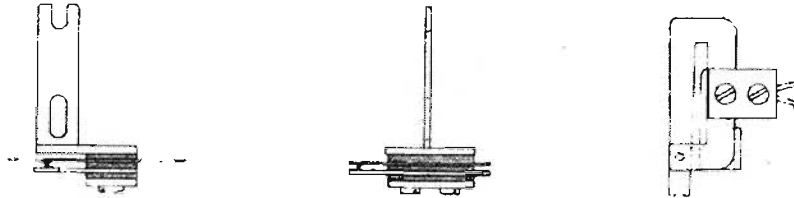
### RELEASE SPRING ASSEMBLY

Catalog Number	Mfgr's Number	Combination	Each 1-49	Each 50-99	Each 100 +
108-1345	D-735455-A	B	9.97	9.36	8.67
108-1265	D-735253-A	B	9.71	9.12	8.44



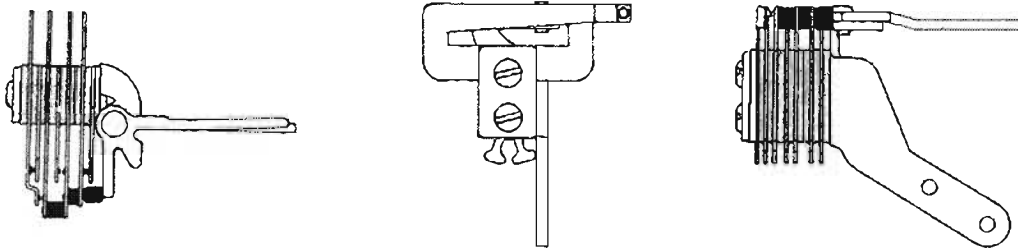
### VERTICAL INTERRUPTER ASSEMBLY

Catalog Number	Mfgr's Number	Combination	Each 1-49	Each 50-99	Each 100 +
108-1300	D-735424-A	B	3.91	3.67	3.40
130-1000	D-730774-A	B	5.98	5.61	5.20
108-1415	D-73689-A	B/B	6.57	6.17	5.71
108-1305	D-735425-A	B/B	9.23	8.67	8.03



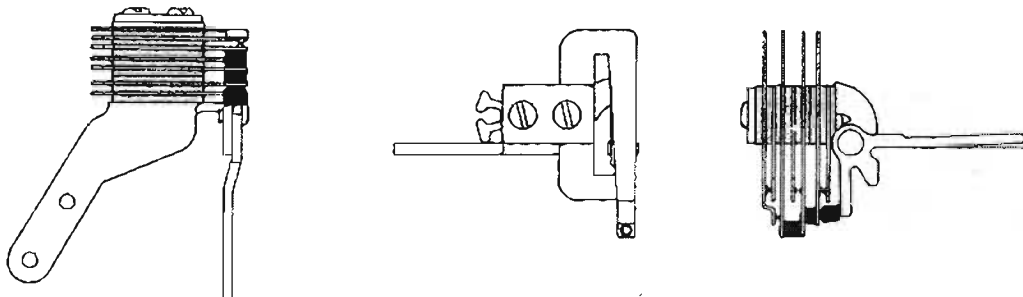
### ROTARY INTERRUPTER ASSEMBLY

Catalog Number	Mfgr's Number	Combination	Each 1-49	Each 50-99	Each 100 +
108-1400	D-735581-A	B/A/D	11.20	10.52	9.74
108-1320	D-735435-A	B/C/A	9.78	9.19	8.51
108-1340	D-735453-A	B/B/C	9.31	8.74	8.10
108-1290	D-735420-A	B/C	7.75	7.28	6.74
108-1285	D-735419-A	B/B/A	9.78	9.19	8.51
108-1390	D-735517-A	B/B/B/A	16.14	15.16	14.04
108-1350	D-735456-A	B/C/A	7.98	7.49	6.94
108-1250	D-735170-A	B/B/A	10.14	9.53	8.82
108-1295	D-735422-A	B/B/A	10.52	9.88	9.15
108-1165	D-730751-A	B/C/A	11.94	11.21	10.38
108-1205	D-735061-A	B/A	8.71	8.17	7.57
108-1215	D-735075-A	B/B/C	10.65	10.00	9.26
108-1275	D-735269-A	C/A	8.64	8.11	7.51



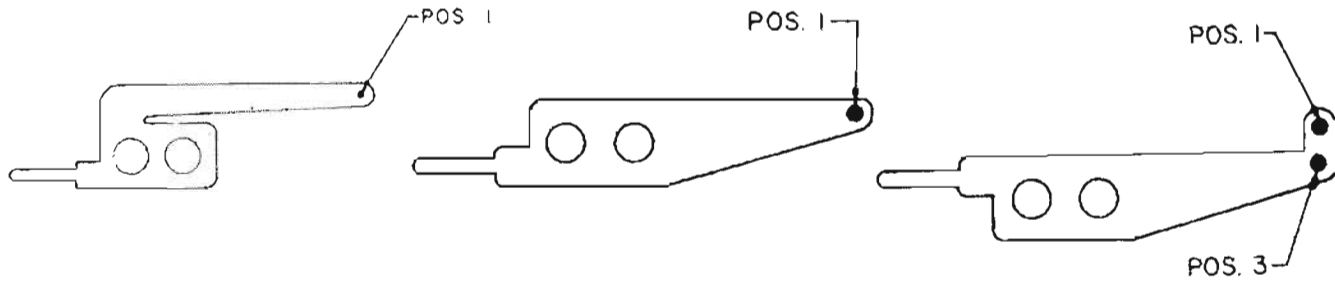
### VERTICAL OFF NORMAL ASSEMBLY

Catalog Number	Mfgr's Number	Combination	Each 1-49	Each 50-99	Each 100 +
108-1276	D-735283-A	C	5.90	5.54	5.13
108-1255	D-735175-A	B/B	8.37	7.86	7.28



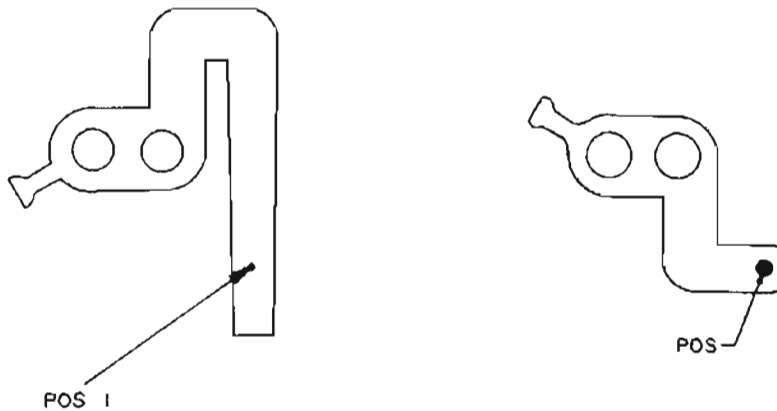
### VERTICAL OFF NORMAL ASSEMBLY

# SPRINGS



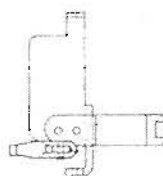
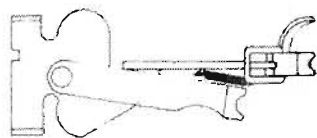
Catalog Number	Mfgr's Number	Miscellaneous Information	Each 1-49	Each 50-99	Each 100 +
113-1280	SC-505534		1.11	1.04	.97
113-1285	SC-509611		.55	.51	.48
113-1360	SC-513614		.69	.64	.60
113-1365	SC-513624		.69	.64	.60
113-1382	SC-515621		.63	.59	.55

Catalog Number	Mfgr's Number	Descriptive Data	Each 1-49	Each 50-99	Each 100 +
113-1005	D-103732-A		1.33	1.25	1.16
113-1015	D-104548-A		1.16	1.09	1.01
113-1000	D-103474-A		1.00	.93	.87
113-1303	SC-512351		.58	.55	.51
113-1318	SC-512524		.63	.59	.55
113-1379	SC-514911		.78	.73	.68



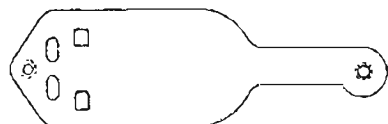
## ASSEMBLY SPRINGS

# ARMATURES

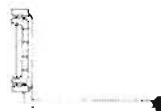
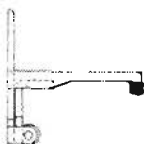


Catalog Number	Mfgr's Number	Descriptive Data	Each 1-49	Each 50-99	Each 100 +
156-1045	D-71169-A	Rotary	5.58	5.24	4.85
156-1050	D-71250-A	"B" Rotary	9.12	8.56	7.93
156-1055	D-71343-A	Vertical	8.17	7.67	7.10
156-1060	D-71651-A	"B/B" Rotary	10.13	9.51	8.81

Catalog Number	Mfgr's Number	Descriptive Data	Each 1-49	Each 50-99	Each 100 +
106-1075	D-71346-A	Release Armature	1.48	1.39	1.29



## ARMATURE

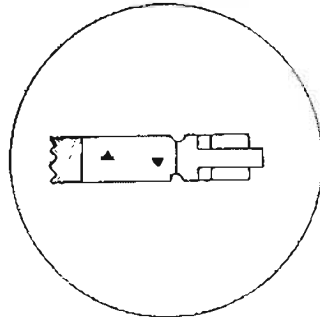


Catalog Number	Mfgr's Number	Descriptive Data	Each 1-49	Each 50-99	Each 100 +
112-1585	D-71163-A	Horizontal Type Relay (Right Regular Arm) Bushing L-170"	2.76	2.59	2.40
112-1590	D-71164-A	Horizontal Type Relay (Left Regular Arm) Bushing L-170"	2.49	2.34	2.17
112-1595	D-71262-A	Used on Horizontal Type Relay (Double Arm) Bushing L-170"	4.08	3.83	3.55
112-1600	D-71402-A	Horizontal Type Relay (Right Short Lever Arm) Bushing L-170"	4.50	4.23	3.92
112-1605	D-71403-A	Horizontal Type Relay (Right Short Lever Arm) Bushing L-170"	4.50	4.23	3.92



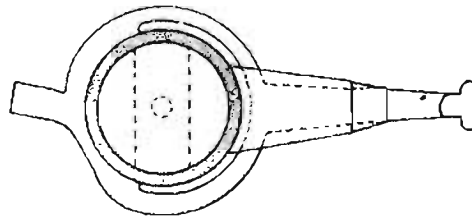
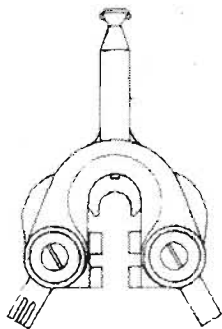
# WIPER CORDS & ACCESSORIES

Catalog Number	Mfgr's Number	Descriptive Data	Each 1-49	Each 50-99	Each 100 +
820-1035	D-542680-A	Length - 4.000"	.19	.18	.17
820-1010	D-542281-A	Length - 4.500"	.21	.19	.18
820-1050	D-543136-A	Length - 4.875"	.26	.25	.23
820-1015	D-542282-A	Length - 6.750"	.31	.29	.27
820-1020	D-542283-A	Length - 7.500"	.32	.30	.28
820-1009	D-542280-A	Length - 8.000"	.34	.32	.30
820-1025	D-542284-A	Length - 9.000"	.38	.36	.33
820-1048	D-542879-A	Length - 9.250"	.39	.37	.34
820-1030	D-542285-A	Length - 11.250"	.40	.38	.35
820-1003	D-542132-A	Length - 12.750"	.41	.39	.38
820-1045	D-542876-A	Length - 13.000"	.41	.39	.36
820-1040	D-542875-A	Length - 14.500"	.43	.40	.37
820-1005	D-542144-A	Length - 19.500"	.46	.43	.40



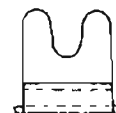
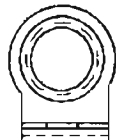
WIPER CORD

Catalog Number	Mfgr's Number	Descriptive Data	Each 1-49	Each 50-99	Each 100 +
123-1000	D-46621-A	Private Wiper	2.65	2.48	2.30
135-1025	D-46622-A	Line Wiper	2.65	2.48	2.30
140-1000	D-46623-A	Vertical Wiper	3.91	3.67	3.40



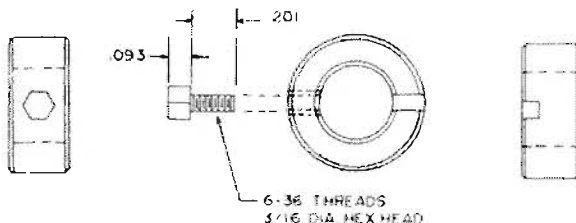
WIPERS

Catalog Number	Mfgr's Number	Descriptive Data	Each 1-49	Each 50-99	Each 100 +
112-1440	D-542260-A	Wiper Cord Holder	.40	.37	.35



WIPER CORD HOLDER

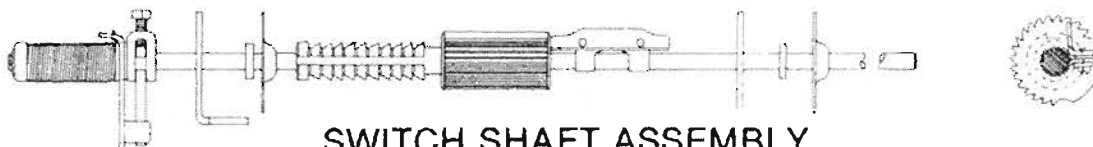
Catalog Number	Mfgr's Number	Descriptive Data	Each 1-49	Each 50-99	Each 100 +
112-1220	D-41473-A	Wiper Collar	.83	.78	.72



WIPER COLLAR

# SWITCH SHAFT ASSEMBLY & ACCESSORIES

Catalog Number	Mfgr's Number	Descriptive Data	Each 1-49	Each 50-99	Each 100 +
154-1080	D-46759-A	Length - 12.00"	23.75	22.30	20.65
154-1075	D-46757-A	Length - 10.25"	22.67	21.29	19.71



SWITCH SHAFT ASSEMBLY

Catalog Number	Mfgr's Number	Descriptive Data	Each 1-49	Each 50-99	Each 100 +
154-1065	D-46755-D	Length - 10.25"	17.59	16.52	15.30
154-1070	D-46755-G	Length - 12.00"	17.59	16.52	15.30



SWITCH SHAFT

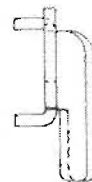
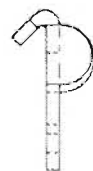
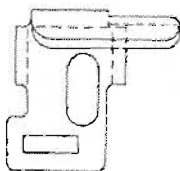
# MECHANICAL ASSEMBLY COMPONENTS

Catalog Number	Mfgr's Number	Descriptive Data	Each 1-49	Each 50-99	Each 100 +
106-1020	D-30383-A	Aluminum	11.40	10.71	9.92



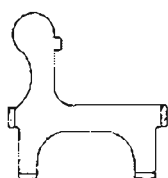
SWITCH FRAME CASTING

Catalog Number	Mfgr's Number	Descriptive Data	Each 1-49	Each 50-99	Each 100 +
106-1025	D-3377-A	Rotary Armature Front Stop	.23	.22	.20



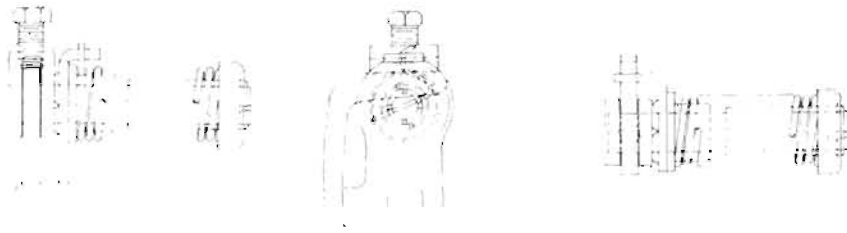
FRONT STOP

Catalog Number	Mfgr's Number	Descriptive Data	Each 1-49	Each 50-99	Each 100 +
156-1015	D-3478-A	Plating-Commercial Nickel (WATTS)	2.09	1.97	1.82



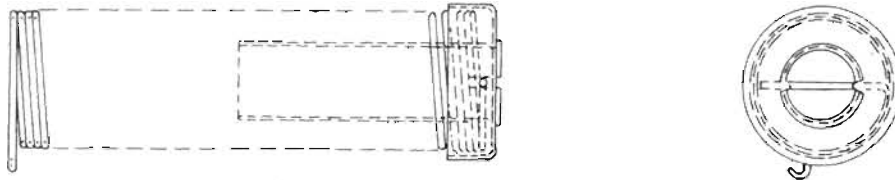
DOUBLE DOG

Catalog Number	Mfgr's Number	Descriptive Data	Each 1-49	Each 50-99	Each 100 +
154-1000	D-109310-A	Found on Switch Shaft Assem.	6.98	6.55	6.07



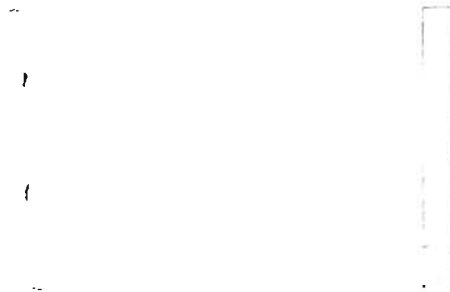
### SHAFT SPRING ASSEMBLY

Catalog Number	Mfgr's Number	Descriptive Data	Each 1-49	Each 50-99	Each 100 +
154-1005	D-109311-A	Found on Shaft Spring Assem.	.97	.91	.84



### SPRING AND CAP ASSEMBLY

Catalog Number	Mfgr's Number	Descriptive Data	Each 1-49	Each 50-99	Each 100 +
156-1025	D-37330-A	Used in Assembly on Shaft Spring Assembly	.26	.24	.23



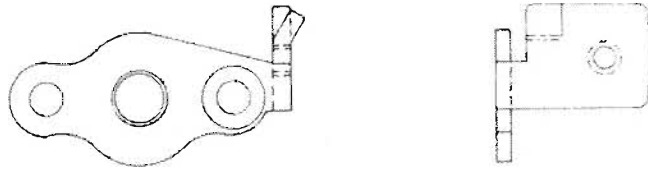
### NORMAL STOP PIN

Catalog Number	Mfgr's Number	Descriptive Data	Each 1-49	Each 50-99	Each 100 +
154-1100	D-730614-A	Used on Assembly of Shaft Assembly	1.02	.96	.89



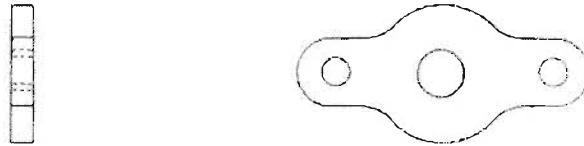
### SHAFT SPRING BRACKET AND HUB ASSEMBLY

Catalog Number	Mfgr's Number	Descriptive Data	Each 1-49	Each 50-99	Each 100 +
154-1105	D-73776-A	Top Switch Shaft Bearing with Bracket	.56	.52	.49



**BEARING**

Catalog Number	Mfgr's Number	Descriptive Data	Each 1-49	Each 50-99	Each 100 +
154-1095	D-7047-A	Lower Switch Shaft Bearing	.67	.63	.59



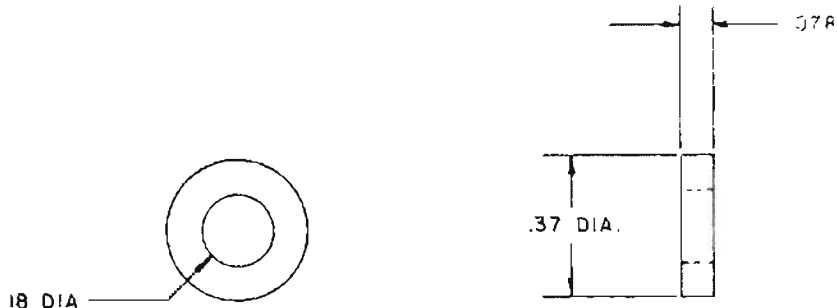
**BEARING**

Catalog Number	Mfgr's Number	Descriptive Data	Each 1-49	Each 50-99	Each 100 +
154-1045	D-46219-A	Switch Shaft Assembly Oil Cup	.06	.05	.04



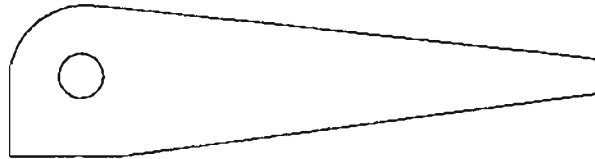
**OIL CUP**

Catalog Number	Mfgr's Number	Descriptive Data	Each 1-49	Each 50-99	Each 100 +
154-1025	D-17268-A	#10 Felt Washer Used with Oil Cup D-46219-A	.10	.09	.08



**WASHER**

Catalog Number	Mfgr's Number	Descriptive Data	Each 1-49	Each 50-99	Each 100 +
113-1025	D-10814-A	Spring Ga. - 25	.26	.25	.23



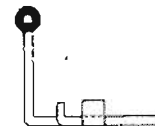
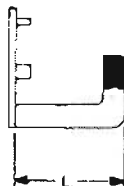
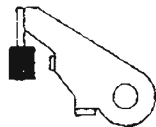
DOUBLE DOG SPRING

Catalog Number	Mfgr's Number	Descriptive Data	Each 1-49	Each 50-99	Each 100 +
106-1055	D-6117-A	Material - Hard Copper	.28	.26	.24



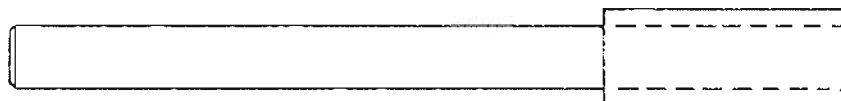
RELEASE LINK

Catalog Number	Mfgr's Number	Descriptive Data	Each 1-49	Each 50-99	Each 100 +
112-1070	D-16286-A	L = .785"	1.28	1.20	1.12
112-1075	D-16286-B	L = .545"	1.17	1.10	1.02



SPRING ARM

Catalog Number	Mfgr's Number	Descriptive Data	Each 1-49	Each 50-99	Each 100 +
106-1040	D-37007-A	Double Dog Bearing Pin	1.89	1.78	1.65



BEARING PIN

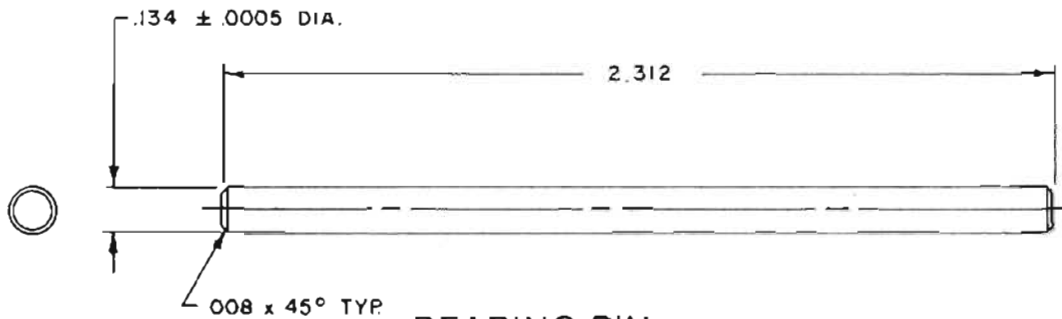
Catalog Number	Mfgr's Number	Descriptive Data	Each 1-49	Each 50-99	Each 100 +
156-1035	D-3775-A	Rotary Arm Bearing Pin	.24	.22	.21



BEARING PIN



Catalog Number	Mfgr's Number	Descriptive Data	Each 1-49	Each 50-99	Each 100 +
156-1040	D-37788-A	Vertical Armature Bearing Pin	.63	.59	.55



**BEARING PIN**

Catalog Number	Mfgr's Number	Descriptive Data	Each 1-49	Each 50-99	Each 100 +
112-1710	D-75307-A	For Rotary Armature-Phenolic	.47	.44	.41



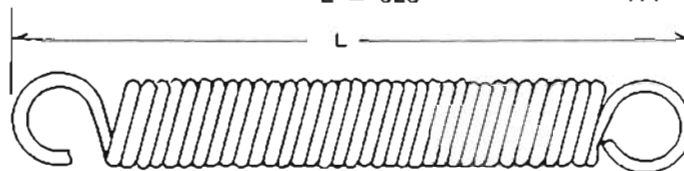
**BUSHING**

Catalog Number	Mfgr's Number	Descriptive Data	Each 1-49	Each 50-99	Each 100 +
154-1110	D-75688-A	Helical Shaft Spring Bushing	.24	.22	.21



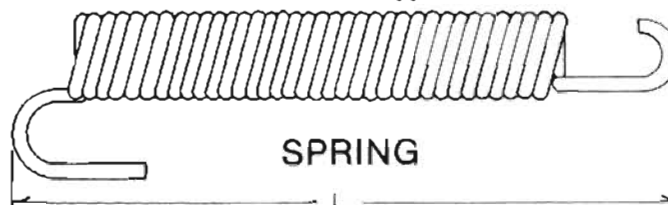
**BUSHING**

Catalog Number	Mfgr's Number	Descriptive Data	Each 1-49	Each 50-99	Each 100 +
154-1010	D-109569-A	Pawl Spring for Rotary Armature L = 500"	.10	.09	.08
154-1020	D-109849-A	Pawl for Vertical Armature L = 625"	.11	.10	.09



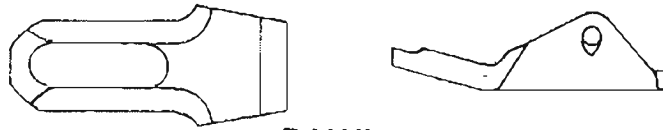
**SPRING**

Catalog Number	Mfgr's Number	Descriptive Data	Each 1-49	Each 50-99	Each 100 +
154-1015	D-109778-A	Release Armature Spring L = 1.950"	.34	.32	.30



**SPRING**

Catalog Number	Mfgr's Number	Descriptive Data	Each 1-49	Each 50-99	Each 100 +
156-1005	D-34001-A	For Rotary Armature	2.89	2.72	2.52



PAWL

Catalog Number	Mfgr's Number	Descriptive Data	Each 1-49	Each 50-99	Each 100 +
106-1035	D-3480-A	For Vertical Armature	3.23	3.03	2.81



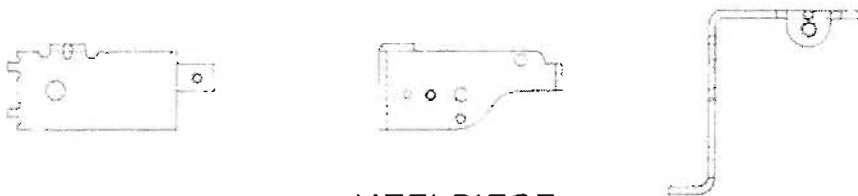
PAWL

Catalog Number	Mfgr's Number	Descriptive Data	Each 1-49	Each 50-99	Each 100 +
106-1065	D-6388-A	For Vertical and/or Rotary Magnet	.35	.32	.30



HEELPIECE

Catalog Number	Mfgr's Number	Descriptive Data	Each 1-49	Each 50-99	Each 100 +
106-1060	D-63171-A	For Release Magnet	2.26	2.12	1.97



HEELPIECE

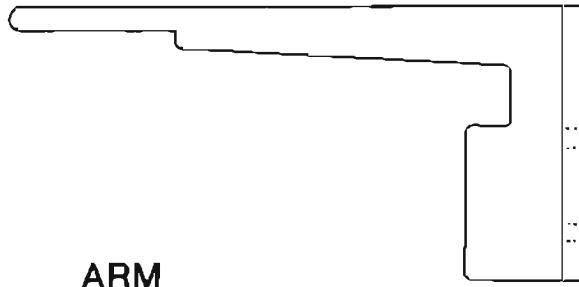
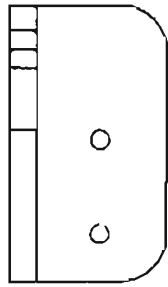
Catalog Number	Mfgr's Number	Descriptive Data	Each 1-49	Each 50-99	Each 100 +
106-1085	D-731680-A	For Rotary Armature - Bottom L = .520" W = .425"	.37	.35	.32
106-1086	D-731680-B	For Rotary Armature - Top L = .550" W = .545"	.44	.41	.38



CLAMP BRACKET ASSEMBLY

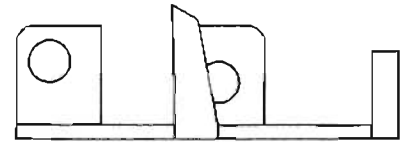
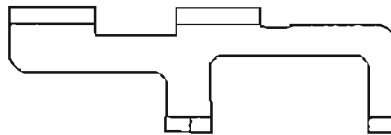
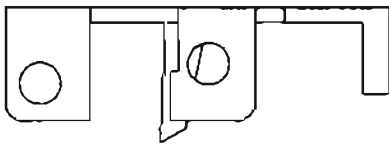


Catalog Number	Mfgr's Number	Descriptive Data	Each 1-49	Each 50-99	Each 100 +
156-1000	D-16158-A	For Rotary Armature	18	.17	.16



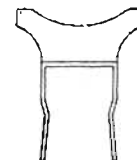
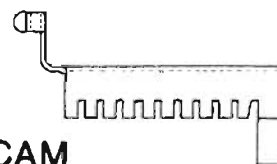
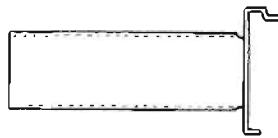
**ARM**

Catalog Number	Mfgr's Number	Descriptive Data	Each 1-49	Each 50-99	Each 100 +
156-1010	D-3456-A	Plating-Commercial Nickel (WATTS)	.47	.44	.41



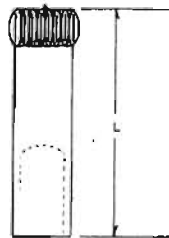
**STATIONARY DOG**

Catalog Number	Mfgr's Number	Descriptive Data	Each 1-49	Each 50-99	Each 100 +
112-1770	D-83078-A	For Normal Post	.97	.91	.85



**CAM**

Catalog Number	Mfgr's Number	Descriptive Data	Each 1-49	Each 50-99	Each 100 +
156-1020	D-37243-A	For Vertical Armature Pawl - Hard Cooper L = .475"	.30	.28	.26
156-1030	D-37333-A	For Rotary Armature Pawl - Hard Cooper L - .285"	.32	.30	.28



**BEARING PIN**

# ELECTRICAL COMPONENTS

Catalog Number	Mfgr's Number	Descriptive Data	Each 1-49	Each 50-99	Each 100 +
395-3440	TNR-15G-680K	Voltage Range (D.C.) 48V-68V	.63	.59	.55



VARISTOR

Catalog Number	Mfgr's Number	Descriptive Data	Each 1-49	Each 50-99	Each 100 +
395-1942	FD-1029-DG	400V, 1 AMP silicone rectifier Diode	.47	.44	.41
395-1945	IN-4005	Silicone Rectifier Diode (Recommended Sub for FD-1029-DG)	.44	.41	.38



DIODE

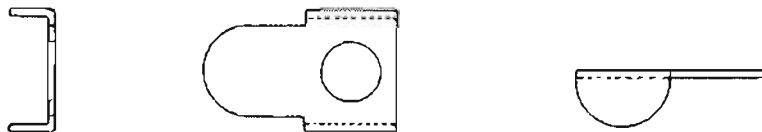
# MISC. HARDWARE

Catalog Number	Mfgr's Number	Descriptive Data	Each 1-49	Each 50-99	Each 100 +
112-1201	D-3690-A	L = 1.187"	.26	.24	.22
112-1202	D-3691-A	L = .934"	.44	.38	.35



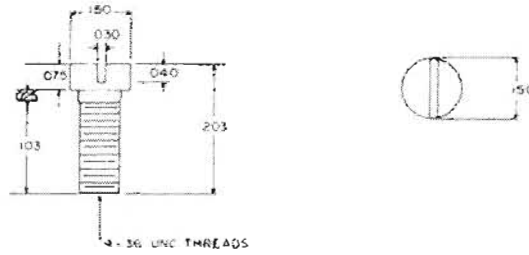
COVER GUIDE POST

Catalog Number	Mfgr's Number	Descriptive Data	Each 1-49	Each 50-99	Each 100 +
112-1080	D-17022-A	Release Arm Washer	.13	.12	.11



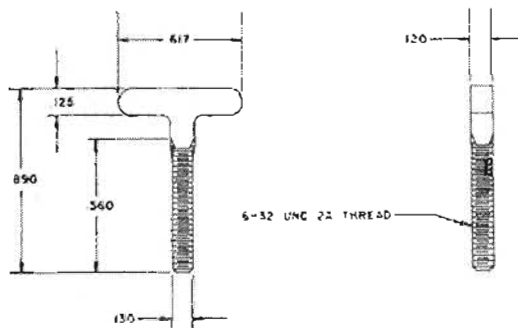
WASHER

Catalog Number	Mfgr's Number	Descriptive Data	Each 1-49	Each 50-99	Each 100 +
118-1375	D-76098-A	Residual Screw-Brass	.14	.13	.12



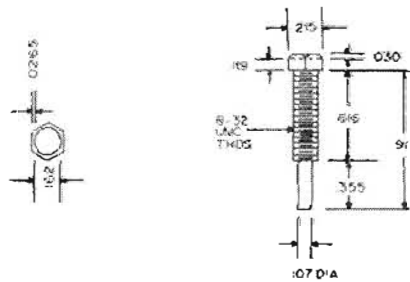
### SCREW

Catalog Number	Mfgr's Number	Descriptive Data	Each 1-49	Each 50-99	Each 100 +
106-1100	D-7615-A	Yellow Zinc Dichromate Finish	.28	.26	.24



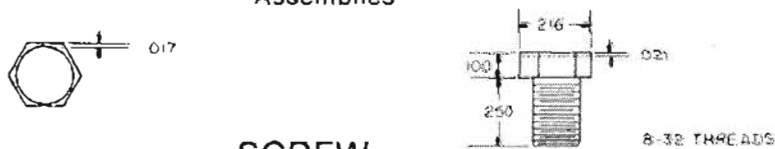
### "T" SCREW

Catalog Number	Mfgr's Number	Descriptive Data	Each 1-49	Each 50-99	Each 100 +
118-1070	D-76185-A	Release Armature Screw-Brass	.09	.08	.07



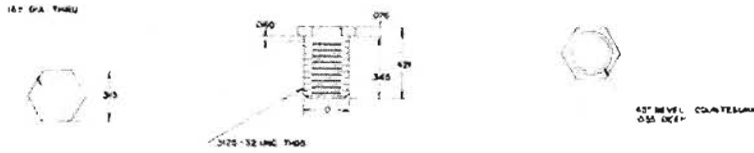
### SCREW

Catalog Number	Mfgr's Number	Descriptive Data	Each 1-49	Each 50-99	Each 100 +
118-1236	D-76552	Screw Used on Clamp Bracket Assemblies	.05	.04	.03



### SCREW

Catalog Number	Mfgr's Number	Descriptive Data	Each 1-49	Each 50-99	Each 100 +
110-1110	D-762238-A	Threaded Magnet Adjusting Bushing For Aluminum Frame	.41	.38	.35



**BUSHING**

Catalog Number	Mfgr's Number	Descriptive Data	Each 1-49	Each 50-99	Each 100 +
106-1070	D-67111-A	Zinc Dichromate Plated	.10	.09	.08



**LOCKING CAP**

Catalog Number	Mfgr's Number	Descriptive Data	Each 1-49	Each 50-99	Each 100 +
112-1435	D-541077-A	Number Plate Holder-Zinc Dichromate Plating	.31	.29	.27



**HOLDER**

Catalog Number	Mfgr's Number	Descriptive Data	Each 1-49	Each 50-99	Each 100 +
112-1725	D-75597-A	Tubular Insulation (Spaghetti) Cloth Woven, Polyester Finish	.04	.03	.02



**INSULATOR, WIPER CORD**

Catalog Number	Mfgr's Number	Descriptive Data	Each 1-49	Each 50-99	Each 100 +
112-1320	D-44709-A	For Upper Back Plate	17	.16	.15



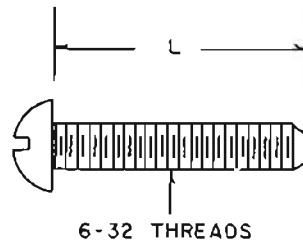
**INSULATOR**

Catalog Number	Mfgr's Number	Descriptive Data	Each 1-49	Each 50-99	Each 100 +
112-1310	D-44375-A	For Lower Back Plate	.19	.18	.17



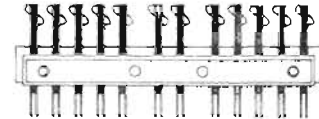
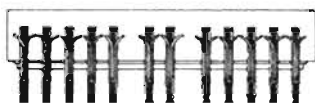
INSULATOR

Catalog Number	Mfgr's Number	Descriptive Data	Each 1-49	Each 50-99	Each 100 +
162-1052	D-76701-J	Screw Used in Spring Assembly Pile-Ups	.04	.03	.02



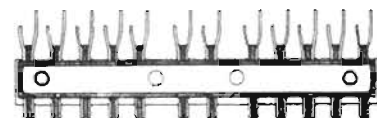
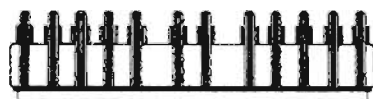
SCREW

Catalog Number	Mfgr's Number	Descriptive Data	Each 1-49	Each 50-99	Each 100 +
155-1005	D-42717-C	24 Pt.	9.10	8.53	7.90



SHELF JACK

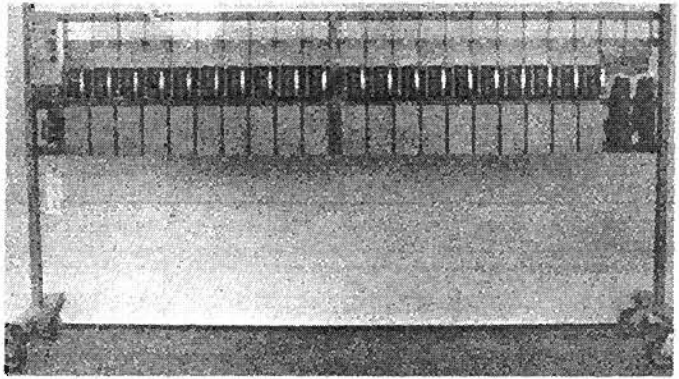
Catalog Number	Mfgr's Number	Descriptive Data	Each 1-49	Each 50-99	Each 100 +
155-1015	D-42725-C	24 Pt.	8.49	7.97	7.38



SWITCH JACK

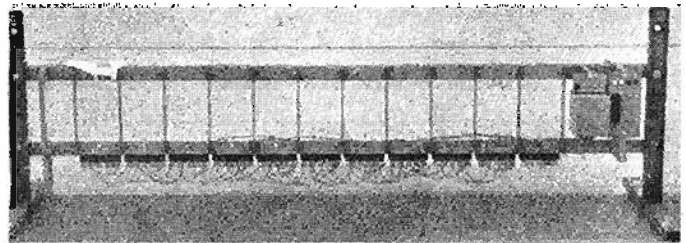
# SHELVES

D-241787-A Linefinder Shelf \$12,825.00  
 Equipped with:  
 H-982461-1 Shelf Cable  
 H-982462-1 Power Cable  
 D-251608-A Bank  
 DH-850685-A98 Distributor Switch  
 D-825451-B Line Equipment



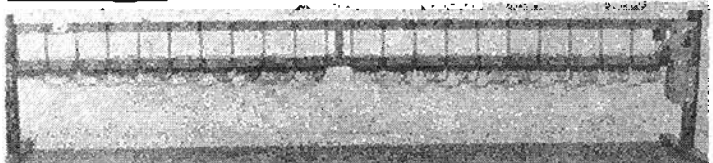
Connector Shelf D-241774-A \$583.73  
 Equipped with:  
 H-882354-7 Signal Equipment \$92.17  
 H-882354-44 Dial Tone Equipment \$53.12

OTHER CONNECTOR SHELVES  
 AVAILABLE ON REQUEST



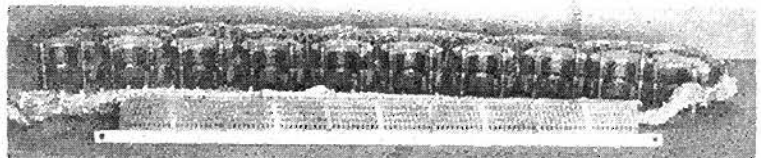
Selector Shelf  
 D-241712-A Selector Shelf \$695.14  
 D-241712-B Selector Shelf \$695.14  
 Equipped with:  
 H-882354-7 Signal Equipment \$92.17

OTHER SELECTOR SHELVES AVAILABLE ON REQUEST

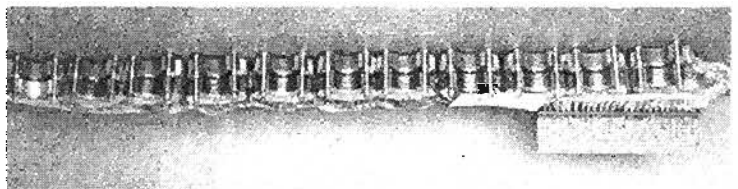


# BANKS

D-252218-E Selector Bank \$790.94  
 D-252218-F Selector Bank \$759.94  
 D-252218-G Selector Bank \$759.94  
 D-252218-H Selector Bank \$790.94



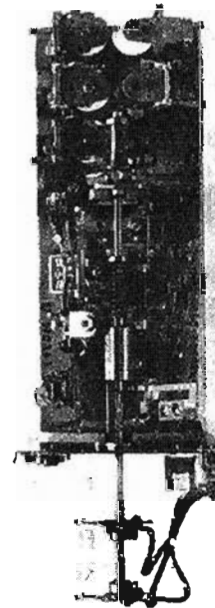
D-251589-A Connector Bank \$790.30  
 D-251589-C Connector Bank 1084.56



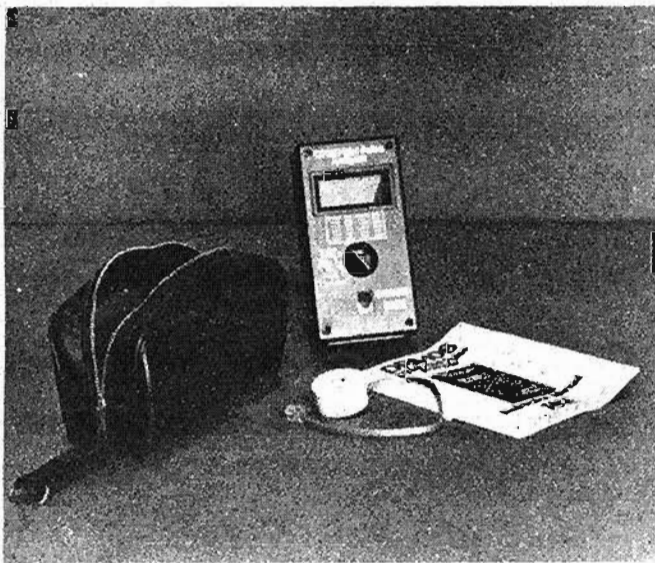
# CIRCUITS

## Step x Step Switches

DH-58466-32A, Connector Test Circuit	\$212.10
DH-58952-36A, Connector Circuit	\$339.38
DH-580056-35A, Connector Circuit	\$339.22
DH-580059-104C, Selector Circuit	\$287.36
DH-580141-D11B, Selector Circuit	\$267.95
DH-580294-104E, Selector Circuit	\$387.95
DH-580298-102D, Selector Circuit	\$356.18
DH-580298-103D, Selector Circuit	\$365.31
DH-580361-B31A, Connector Circuit	\$405.49
DH-580265-15A, Selector Circuit	\$516.18
DH-580364-A33A, Connector Circuit	\$512.85
DH-580368-A20A, Linefinder Circuit	\$263.98
DH-580368-A21A, Linefinder Circuit	\$283.46
DH-580368-A21C, Linefinder Circuit	\$294.02
DH-850665-A55A, Group Relays	\$370.81
D-825451-B, Line plate for Linefinder Shelf	\$357.30



# DPA-106



★ designed specifically for testing rotary dial and push button telephones.

★ digitally measures dial speed and percent break on dial instruments and frequency on push button instruments.

★ portable, self-contained unit for field or bench use

★ supplied complete with carrying case, test leads, instruction manual, and a one-year warranty.

### Prices Each

1-9	10-99	100 +
\$299.50	\$279.50	\$259.00

Optional AC Adapter \$25.00 each

SACE, Inc.  
418 South Oakes  
San Angelo, Texas 76903  
915-655-9511  
Telex 739442

BULK RATE  
U.S. POSTAGE  
PAID  
Permit No. 23  
Western Springs

MARCH 91

PACIFIC T&T,  
4 N SECOND ST RM  
SAN JOSE CA 95113

**ORDERING INFORMATION**

Orders for piece parts and equipment should be entered with SACE, Incorporated at:

418 South Oakes  
San Angelo, Texas 76903  
P.O. Box 4077  
San Angelo, Texas 76902  
Telephone: 915-655-9511  
Telex: 739442

Minimum order amount of \$50.00.

WARRANTY: One year from date of shipment.

**Call SACE Today For Immediate Shipment!**

A series of horizontal lines and thick black bars, likely representing a redacted or blank form area.