

INSTALLER: Add this leaflet to your  
Automatic Electric *Handbook* 700-0 or 700-X



Northlake, Illinois, U.S.A.

Technical  
bulletin 700-43  
Revised April 1956

## MONOPHONE TYPE 43 —INSTALLATION—

### 1. GENERAL

The type 43 Monophone can be used with a ringer box, as a complete telephone instrument. It can also be used as an extension set, with or without a ringer.

The Monophone may be mounted on a desk, wall, or other flat surface such as a post or column. A special L-bracket (supplied when specified) permits mounting near the end of an abutting wall or partition which projects into a room.

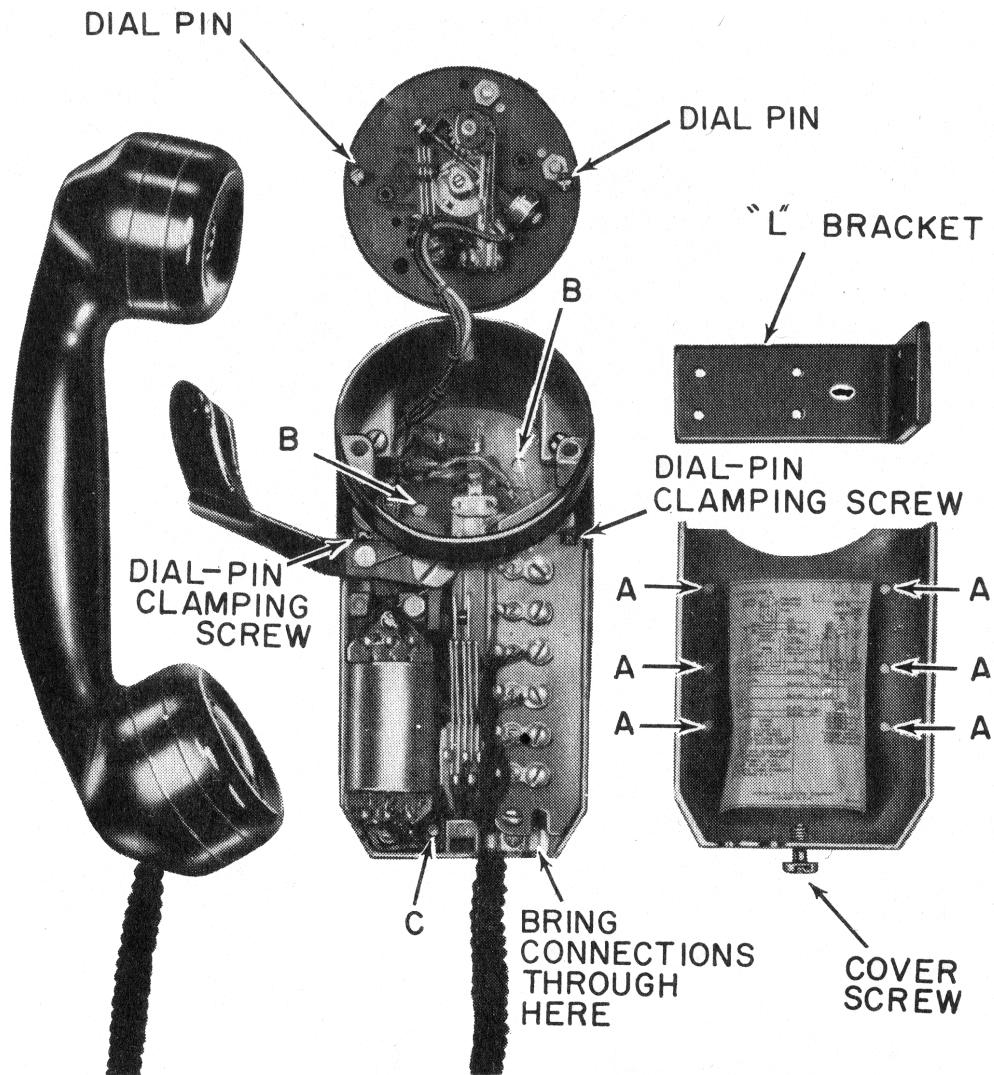


*Figure 1.*

To simplify mounting, the base has 3 and the cover has 6 knockout holes. However, before knocking out any holes, decide the mounting position and knock out only the necessary holes. Automatic Electric Company knockout tool No. H-69024 (an  $\frac{11}{64}$ " punch) is a suitable tool.

## 2. COMPONENTS

The type 43 Monophone consists of a handset attached by a cord to a base upon which are mounted the dial, hook-switch, induction coil, two capacitors, a terminal strip, and a cover.



*Figure 2.*

## 3. REMOVING THE COVER

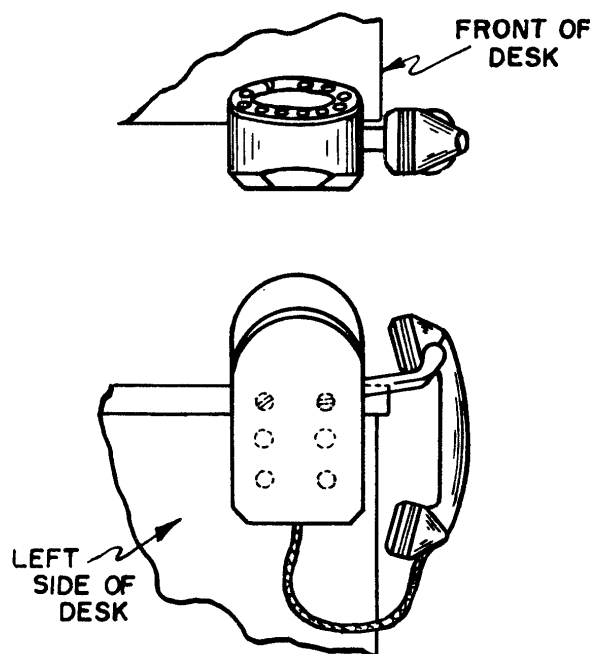
Loosen the non-losable screw marked *COVER SCREW* in figure 2. Remove the cover by carefully sliding it away from the dial housing.

#### 4. REMOVING THE DIAL

The dial (or dial blank) need only be removed if the Monophone is to be mounted flat on a wall, or mounted using the L-bracket, or used in a S.A.T.T. installation. To remove the dial, first remove the cover and loosen the two set screws marked *DIAL-PIN CLAMPING SCREW* in figure 2. Carefully pull the dial assembly from the dial housing. Do not put undue strain on the dial wires.

#### 5. DESK MOUNTING (figures 1 and 3)

For desk mounting, the preferred position usually is the front left corner as in figure 1. The dial faces inward just above the desk top and the handset hangs even with the front edge of the desk or extends slightly beyond.



*Figure 3. Desk mounting.*

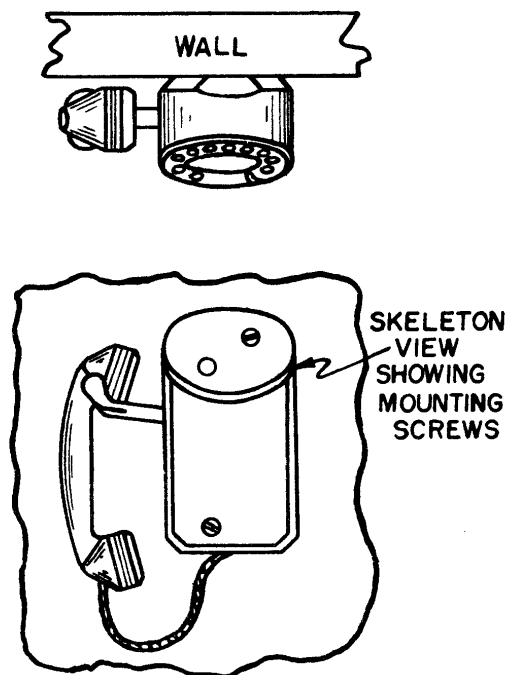
For mounting in this position, the cover has 6 knockout holes marked A in figure 2. These holes permit you to mount the Monophone so the dial will be at almost any desired level above the desk top. Figure 1 shows a com-

pleted installation. Knock out 2 holes from the inside as required. Place the hole to be knocked out over an open space with support around the edges, and give the knockout pin a sharp blow.

With two No. 8 screws, mount cover on side of desk.

## 6. WALL MOUNTING (figure 4)

For mounting the Monophone flat on a wall or other surface, the base has 3 knockout holes. To reach 2 of these, marked *B* in figure 2, remove the dial. The third, marked *C* in figure 2, is in the lower part of the base.



*Figure 4. Wall mounting.*

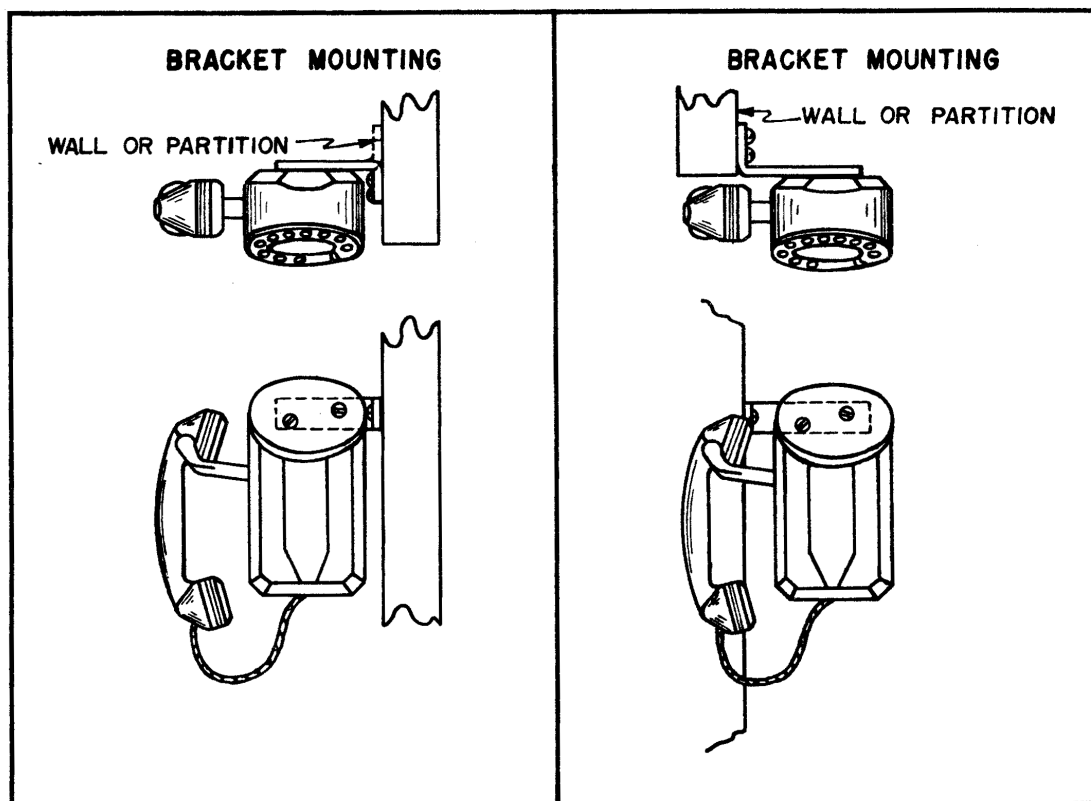
At least two of the three holes in the base should be used to mount the Monophone, preferably the *C* hole and one of the *B* holes. Use No. 8 screws suitable for the surface upon which the Monophone is to be mounted. Figure 4 shows the Monophone mounted flat on a wall.

## 7. L-BRACKET MOUNTING (figures 5 and 6)

The L-bracket is an accessory which can be ordered from Automatic Electric Company under catalog No. AW-33.

Figures 5 and 6 show mounting arrangements using the L-bracket.

Locate and mount the bracket with three No. 8 screws.



*Figure 5.*

*Figure 6.*

Knock out the two *B* holes behind the dial. Then mount Monophone base onto bracket, using two No. 8-32 $\times$  $\frac{5}{16}$ " R.H.I.M. screws supplied with the bracket. Insert the screws inside the Monophone and thence into the bracket. Tighten securely.

# 8. CONNECTIONS

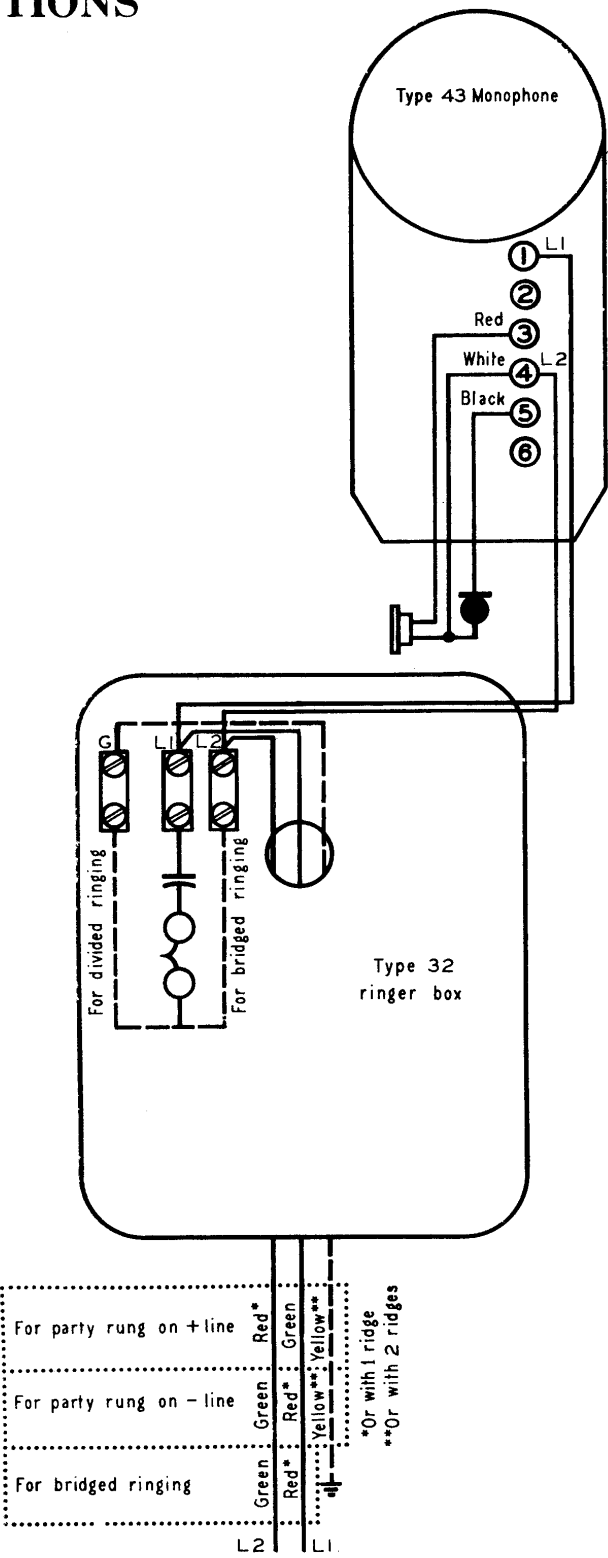
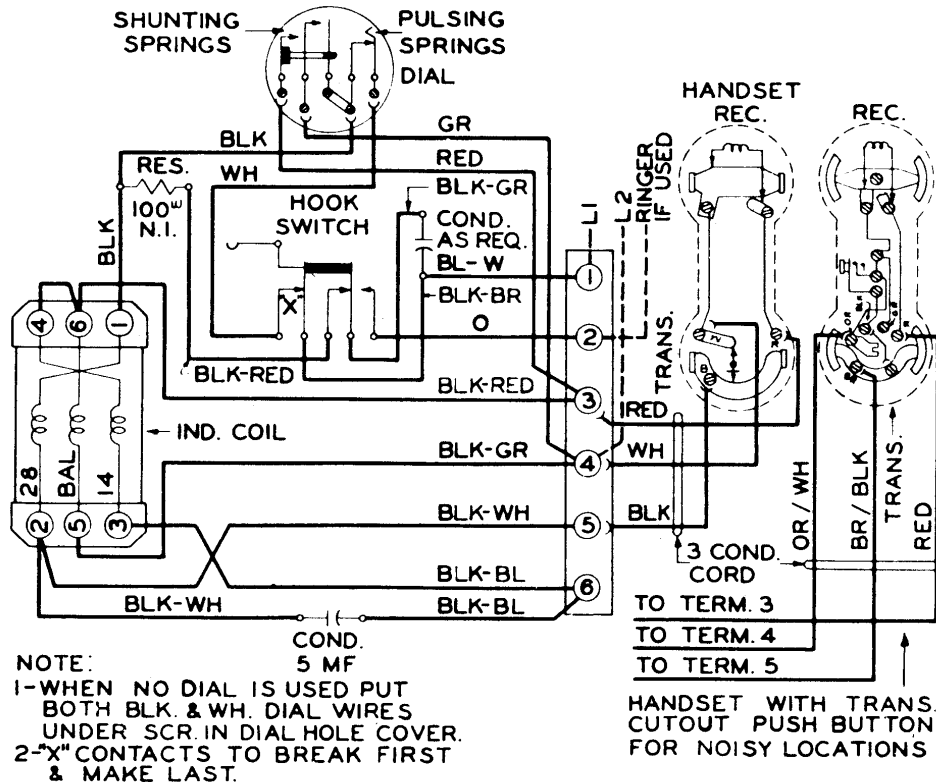


Figure 7. Connection diagram.



8.1 *With type 32 ringer box.* Mount the ringer box under the desk, on the wall, or in any convenient location. Run the line wires to the ringer-box terminal strip. Connect per figure 7.

For the wire between ringer-box terminal L1 and Monophone terminal 1, use the same tracer as for the wire between ringer-box terminal L1 and the protector or P.B.X. switch-board, etc. Likewise, for L2 use the same tracer throughout.



**Figure 8. Wiring diagram.**

8.2 *With ringer box other than type 32.* If the ringer box has a capacitor, connect per §8.1 and figure 7.

If the ringer box contains only a ringer, run the line wires to Monophone terminals 1 and 4, and the ringer-box wires to Monophone terminals 2 and 4 for bridged ringing or to Monophone terminal 2 and to ground for divided ringing (see figure 8).

8.3 *Extension station without ringer box.* Connect interior wire from main station to type 43 extension Monophone terminals 1 and 4.

8.4 *Isolated station without ringer box.* Connect line wires to terminals 1 and 4.

8.5 *S.A.T.T. installation.* For adaptation instructions for a type 43 Monophone in a Strowger Automatic Toll Ticketing area, write for Automatic Electric Company drawing 37-A-6873.

8.6 *Connections to protector, etc.*

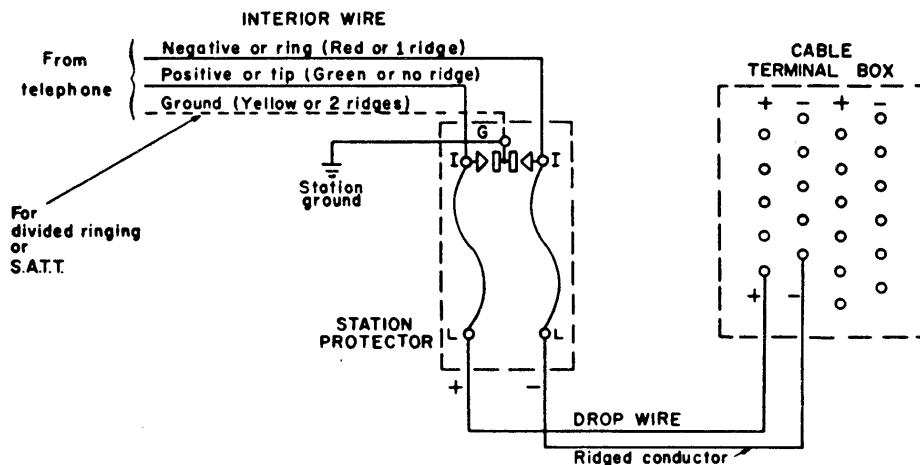


Figure 9. Typical connections to protector, cable terminal, etc.

## 9. PLUG-BUTTONS FOR UNUSED HOLES

If the Monophone is moved to a new mounting position, exposing knocked out holes, these may be covered with United-Carr Fastener Corporation black-finish  $\frac{3}{16}$ " brass "DOT" plug-buttons No. 50626, which you can order from Automatic Electric Company as snap-in plug-buttons D-57125-A.

## 10. ORDERING INFORMATION

<i>Description</i>	<i>Order as</i>
Type 43 Monophone with 1-0 dial.....	AA-69
Type 43 Monophone with ABC dial.....	L-397-LO
Type 43 Monophone without dial.....	L-397-BO
Knockout tool.....	H-69024
L-bracket with 2 #8-32 $\times\frac{5}{16}$ " RHIM screws.....	AW-33
Type 32 ringer box with untuned ringer.....	AO-68
Type 32 ringer box with harmonic ringer.....	L-1504-A*

\*Add ringer frequency. For example, for type 32 ringer box with 30~ringer, order L-1504-A30.

Printed in U.S.A. by  
Brookes & Sons Company  
1000 2-58

from the TCI Library