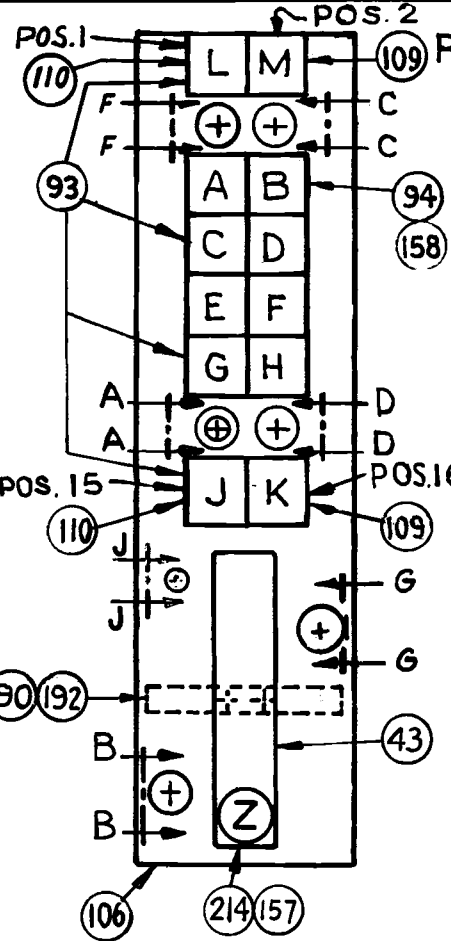
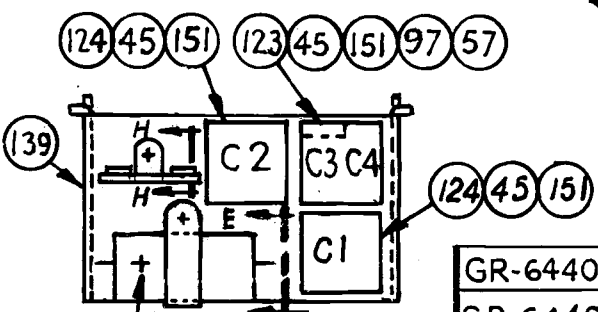
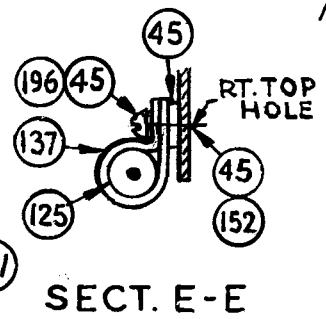
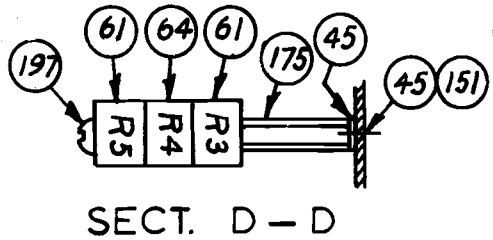
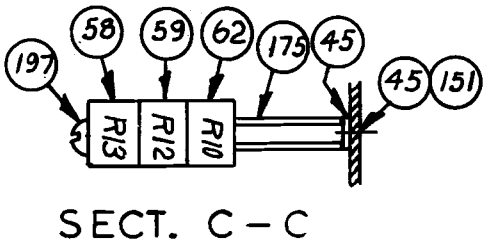
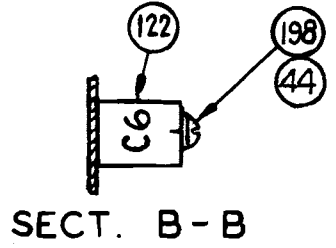
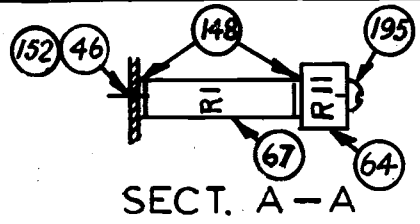


ISSUE: 1
 ZDH-580370-B30
 CL'D:
 NEW SECT. AA
 RES. R2 WAS
 L.W.
 H.J.B.
 VMB MK
 8-3-70
 ISS: 2
 CLASS "A"
 3DH-580370-B30
 CHANGED SECT.
 A-A, C-C, D-D
 & FIG. 1
 ADDED SHEET 2
 SECT. F-F, G-G
 & H-H
 J.S.J.
 J.B. A.G.
 12.2.70
 ISS: 3
 4DH-580370-B30
 CL B
 REMOVED FROM
 RLYS 175H/189
 V.B.
 C.S. G.M.H.
 2-25-71
 ISS: 4
 5DH-580370-B30
 C.L.B.
 SECT. G-G, REND
 RIAR, ADDED DT
 SECT. J-J
 W.R.B. L.O.
 6-29-72
 ISS: 6
 7DH-580370-B30
 ISS: 7
 8DH-580370-B30
 ISS: 8



RLY. TABLE

POS.	ITEM
1	215
2	216
5	217
6	218
7	219
8	220
9	221
10	222
11	223
12	224
15	225
16	226



- MANUFACTURING NOTES:
- FOR MFG. INF. SEE SPEC. 5296.
 - STAMP FUNCT. DESIGNS PER H-43286 FIG. 1, 7, 32 & 48.
 - WIPERS TO BE MTD. & WIRED PER H-63557 FIG. 1.
 - FOR LOCATING & WIRING OF RECT, CAP. & THERMISTOR SEE WIRING INSTS. USE D-543040 SLEEVING OVER EXPOSED PIGTAILS.
 - FOR WIRING USE D-543386 PVC WIRE 24 AWG.
 - NORMAL POST SPGS. SHALL NOT OPERATE ON ANY LEVEL.
 - MOUNT TERM. STRIP: ITEM 221 IN BOT. MTG. HOLE OF RLY. POS. 16 & ITEM 81 IN BOT. MTG. HOLE OF RLY. POS. 6, USING 1 ITEM 148 & 159.

GR-6440-A4A	H-580370-B	2A	DH-580370-B30B
GR-6440-A4	H-580370-B	1A	DH-580370-B30A
RLY. "K"	CKT.	FIG.	PART NO.

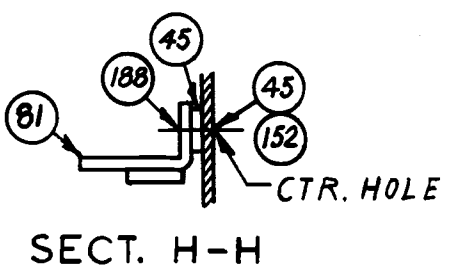
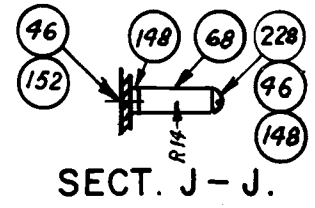
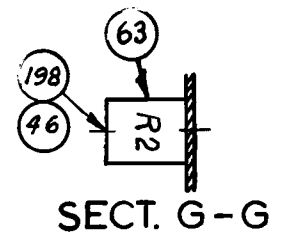
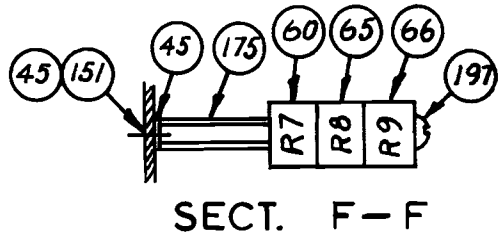
CONNECTOR
 SERIES "C-6" MTG.

CONFIDENTIAL - NOT FOR PUBLICATION
 THIS DRAWING IS THE PROPERTY OF AUTOMATIC ELECTRIC COMPANY. ITS USE IS CONDITIONED UPON THE USER'S AGREEMENT NOT TO COPY OR REPRODUCE THE DRAWING IN WHOLE OR IN PART, OR TO USE THE DRAWING TO REPRODUCE THE MATERIAL DESCRIBED THEREIN, OR FOR ANY OTHER PURPOSE, WITHOUT WRITTEN PERMISSION FROM AUTOMATIC ELECTRIC COMPANY. THIS NOTICE DOES NOT APPLY TO THE U.S. GOVERNMENT TO THE EXTENT THAT IT IS INCONSISTENT WITH ANY CONTRACT WITH THE GOVERNMENT UNDER WHICH THIS DRAWING IS DELIVERED.

DH-580370-B30

POSITIVE END
 FIG. 1

ISSUE: 1
 I.S.: 4
 5DH-580370-B30
 C.T. B
 SECT. G-G ADDED
 ITEM 68/150
 M.F.C. NOTE 6.
 W.R.B.
 G.M.H. G.M.H.
 4-26-72
 I.S.: 5
 I.S.S.: 6
 7M-580370-B30
 REG.
 REVISED IN PG
 NOTE 6.
 L.O. L.O. L.O.
 9-4-74
 I.S.S.: 7
 8DH-580370-B30
 FROM SECT. B-B
 DELETED CAP 65
 NOTE 6 ADDED CAP
 N.W.
 A.Z. L.O.
 3-7-75
 I.S.S.: 8



DRAWING STOCK LIST

AMOUNT	U/M	PART NUMBER				ITEM	G/P	DESCRIPTION
		PFX	BASE	SUFFIX	ISSUE			
1.00	PC	D	21574	6		43		COMMON PARTS STKL
2.00	PC	D	1725	A		44		WASHER 6
7.00	PC	D	1742	A		45		WHR-PLAIN .173X.438X.032
1.00	PC	D	281410	A		57		RESISTOR 200.2 W -1-
2.00	PC	D	281126	A		58		RESISTOR 1K NI 1W
1.00	PC	D	281135	A		59		RESISTOR 3K NI 1W
1.00	PC	D	281132	A		61		RESISTOR 2K NI 1W
1.00	PC	D	281124	A		62		RESISTOR 500 NI 1W
1.00	PC	D	281137	A		63		RESISTOR 5K NI 1W
1.00	PC	D	284088	A7		64		RESISTOR-100 25W
1.00	PC	D	283059	A		65		RESISTOR 1500 NI
1.00	PC	D	323296	A		77		BUSYING KEY ASSY
16.00	PC	FD	1029	0G		79		DIODE
1.00	PC	FD	1029	AF		80		THERMISTOR
1.00	PC	D	36087	A		82		POST-NORMAL
2.00	PC	D	41473	A		84		COLLAR WIPER
2.00	PC	D	41097	A		85		BANK ROD
2.00	PC	D	41149	A		87		COLLAR
1.00	PC	D	42725	C		90		JACK SW-24 PT
1.00	PC	D	42326	A		92		JACK-TEST
4.00	PC	D	44410	A		93		INSULATOR
12.00	PC	D	44459	A		94		INSULATOR
1.00	PC	D	44864	A		97		INSULATOR
2.00	PC	D	45522	A		103		WIPER-QUICK CH
1.00	PC	D	45766	A		105		SWITCH SHAFT ASSY
1.00	PC	D	470347	A		106		BASE
1.00	PC	D	490025	H		107		COVER ASSEMBLY
2.00	PC	D	3590	A		109		POST-GUIDE
2.00	PC	D	3691	A		110		POST-GUIDE
4.00	PC	D	542281	A		116		COPO-WIPER
1.00	PC	D	68272	A		121		CAPACITOR .005MF
1.00	PC	D	68920	AF		122		CAPACITOR
1.00	PC	D	68562	A		123		CAPACITOR 1&1MF
2.00	PC	D	68762	A		124		CAPACITOR 2.15MF
1.00	PC	D	71194	A		133		ARMATURE
1.00	PC	D	71250	A		134		ARMATURE-ROTARY
1.00	PC	D	732023	A		136		RLS MAG & BRKT ASSY
1.00	PC	D	731855	B		139		RRKT-ASSY
1.00	PC	D	735421	A		143		SPG ASM-ROTARY
1.00	PC	NP	5	A6		145		ROT OFF NORMAL SPG ASSY
1.00	PC	D	735105	A		146		ARM SPRING COMB
1.00	PC	D	735420	A		147		SPG ASSM
2.00	PC	D	75221	A		143		BUSHING
3.00	PC	D	7700	A		151		NUT HEX 8-32X5/16
3.00	PC	D	7701	A		152		NUT HEX 6-32X5/16
2.00	PC	D	760790	A		157		WHIMS 8-32X5/16
24.00	PC	D	761072	A		158		SCR&BUSH ASSY
1.00	PC	D	83076	A		167		CAM
1.00	PC	NP	1	F6		172		SPG ASM-NORM POST

DATE	SHEET TOTAL	DESCRIPTION	PART NUMBER			ISSUE
			PFX	BASE	SUFFIX	
3-1-74	1 OF 2	CONNECTOR	DH	580370	A30A	021

CONFIDENTIAL - NOT FOR PUBLICATION
 THIS DRAWING IS THE PROPERTY OF GTE AUTOMATIC ELECTRIC INCORPORATED. ITS USE IS
 CONDITIONED UPON THE USER'S AGREEMENT NOT TO COPY OR REPRODUCE THE DRAWING
 IN WHOLE OR IN PART OR TO USE THE DRAWING TO REPRODUCE THE MATERIAL DESCRIBED
 THEREIN, OR FOR ANY OTHER PURPOSE WITHOUT WRITTEN PERMISSION FROM GTE AUTO-
 Matic ELECTRIC INCORPORATED. THIS NOTICE DOES NOT APPLY TO THE U.S. GOVERNMENT
 TO THE EXTENT THAT IT IS INCONSISTENT WITH ANY CONTRACT WITH THE GOVERNMENT
 UNDER WHICH THIS DRAWING IS DELIVERED.

A

GTE AUTOMATIC ELECTRIC
 NORTHLAKE, ILLINOIS 60164

DRAWING STOCK LIST

AMOUNT	U/M	PART NUMBER				ITEM	G/P	DESCRIPTION
		PFX	BASE	SUFFIX	ISSUE			
1.00	PC	D	762047	Y		173		PHSLT SMS .138-32X3
1.00	PC	D	762150	A		184		RDGHSLT SMS.138-32X1/8
3.00	PC	D	762047	C		187		PHSLT SMS .138-32X1/4
2.00	PC	D	762047	D		188		PHSLT SMS .138-32X5/16
2.00	PC	D	761101	C		192		RH SLT SMS-138-32X11/16
1.00	PC	D	812365	A		214		RLY-28
1.00	PC	GR	6177	A9		215	2	RELAY-HORIZONTAL
1.00	PC	GR	8548	A1A		216	2	RELAY
1.00	PC	GR	6495	A7		217		RELAY
1.00	PC	GR	5124	A8A		218		RELAY
1.00	PC	GR	1599	C1		219		RLY-HORIZ
1.00	PC	GR	5056	F3		220		RELAY
1.00	PC	GR	63249	A2		221		RLY-HORIZ
1.00	PC	GR	60094	A2		222		RLY-HORIZ
1.00	PC	GR	5729	A2		223		RELAY
1.00	PC	GR	6440	A4		224		RLY-HORIZ
1.00	PC	GR	60405	A1		225	2	RLY-HORIZ
1.00	PC	GR	63407	A1		226	2	RLY HORIZ
2.00	PC	D	762047	V		227		PHSLT SMS .138-32X2-1/4
1.00	PC	D	281860	A		228		RESISTOR 10K NI 1 W
1.00	PC	D	762047	RJ		230		PHSLT SMS .138-32X1-7/8

DATE	SHEET TOTAL	DESCRIPTION	PART NUMBER			ISSUE
			PFX	BASE	SUFFIX	
	2 OF 2	CONNECTOR	DH	580370	A30A	021

CONFIDENTIAL - NOT FOR PUBLICATION
 THIS DRAWING IS THE PROPERTY OF GTE AUTOMATIC ELECTRIC INCORPORATED. ITS USE IS
 CONDITIONED UPON THE USER'S AGREEMENT NOT TO COPY OR REPRODUCE THE DRAWING
 IN WHOLE OR IN PART OR TO USE THE DRAWING TO REPRODUCE THE MATERIAL DESCRIBED
 THEREIN OR FOR ANY OTHER PURPOSE WITHOUT WRITTEN PERMISSION FROM GTE AUTO-
 MATIC ELECTRIC INCORPORATED. THIS NOTICE DOES NOT APPLY TO THE U.S. GOVERNMENT
 TO THE EXTENT THAT IT IS INCONSISTENT WITH ANY CONTRACT WITH THE GOVERNMENT
 UNDER WHICH THIS DRAWING IS DELIVERED.

A

NORTHLAKE ILLINOIS 60164

DRAWING STOCK LIST

AMOUNT	U/M	PART NUMBER				ITEM	G/P	DESCRIPTION
		PFX	BASE	SUFFIX	ISSUE			
1.0	PC	D	21974	6		43	COMMON PARTS STKL	
2.0	PC	D	1724	A		44	WHR-PLAIN .149X.312X.032	
13.0	PC	D	1742	A		45	WHR-PLAIN .173X.438X.032	
3.0	PC	D	1725	A		46	WASHER 6	
1.0	PC	D	281410	A		57	RESISTOR 200,.2 W -1-	
1.0	PC	D	281117	A		58	RESISTOR 100 NI 1W	
1.0	PC	D	281119	A		59	RESISTOR 200 NI 1W	
1.0	PC	D	281124	A		60	RESISTOR 500 NI 1W	
2.0	PC	D	281126	A		61	RESISTOR 1K NI 1W	
1.0	PC	D	283059	A		62	RESISTOR 1500 NI	
1.0	PC	D	281132	A		63	RESISTOR 2K NI 1W	
2.0	PC	D	281135	A		64	RESISTOR 3K NI 1W	
1.0	PC	D	281137	A		65	RESISTOR 5K NI 1W	
1.0	PC	D	281860	A		66	RESISTOR 10K NI 1 W	
1.0	PC	D	284088	A7		67	RES 100 10% 25W	
1.0	PC	D	284076	A16		68	RESISTOR 1K,5 W	
1.0	PC	D	320298	A		77	BUSYING KEY ASSY	
18.0	PC	FD	1029	DG		79	DIODE	
1.0	PC	FD	1029	AF		80	THERMISTOR	
2.0	PC	D	15C005	A		81	STRIP-TERMINAL	
1.0	PC	D	36087	A		82	POST-NORMAL	
2.0	PC	D	41473	A		84	COLLAR WIPER	
2.0	PC	D	41097	A		85	BANK ROD	
2.0	PC	D	41149	A		87	COLLAR	
1.0	PC	D	42725	C		90	JACK SW-24 PT	
1.0	PC	D	42326	A		92	JACK-TEST	
4.0	PC	D	44410	A		93	INSULATOR	
12.0	PC	D	44469	A		94	INSULATOR	
1.0	PC	D	44864	A		97	INSULATOR	
2.0	PC	D	46622	A		103	WIPER-QUICK CH	
1.0	PC	D	46766	A		105	SWITCH SHAFT ASSY	
1.0	PC	D	470400	B		106	BASE	
1.0	PC	D	490025	W		107	COVER	
2.0	PC	D	3690	A		109	POST-GUIDE	
2.0	PC	D	3691	A		110	POST-GUIDE	
4.0	PC	D	542281	A		116	CORD-WIPER	
1.0	PC	D	68820	AH		*121	CAP .005 MF +40 -0 600 V	
1.0	PC	D	68274	A		122	CAPACITOR .04MF	
1.0	PC	D	68562	A		123	CAPACITOR 1&1MF	
2.0	PC	D	68762	A		124	CAPACITOR 2.15MF	
1.0	PC	D	68758	DT		125	CAP 100MF +75-10 7	
1.0	PC	D	71194	A		133	ARMATURE	
1.0	PC	D	71250	A		134	ARMATURE-ROTARY	
1.0	PC	D	732023	A		136	RLS MAG & BRKT ASSY	
1.0	PC	D	731449	M		137	CLAMP	
1.0	PC	D	731855	B		139	BRKT-ASSY	
1.0	PC	D	735424	A		143	BRKT-ROT INT SPG	
1.0	PC	NP	5	A6		145	ROT OFF NORMAL SPG ASSY	
1.0	PC	D	735105	A		146	ARM SPRING COMB	

01/09/75 DATE	SHEET TOTAL	DESCRIPTION	PART NUMBER	ISSUE
1-23-75	1 OF 2	CONNECTOR	PFX BASE SUFFIX	
			DH 580370 B30A	013

CONFIDENTIAL - NOT FOR PUBLICATION
 THIS DRAWING IS THE PROPERTY OF GTE AUTOMATIC ELECTRIC INCORPORATED. ITS USE IS
 CONDITIONED UPON THE USER'S AGREEMENT NOT TO COPY OR REPRODUCE THE DRAWING
 IN WHOLE OR IN PART, OR TO USE THE DRAWING TO REPRODUCE THE MATERIAL DESCRIBED
 THEREIN, OR FOR ANY OTHER PURPOSE, WITHOUT WRITTEN PERMISSION FROM GTE AUTO-
 Matic ELECTRIC INCORPORATED. THIS NOTICE DOES NOT APPLY TO THE U.S. GOVERNMENT
 TO THE EXTENT THAT IT IS INCONSISTENT WITH ANY CONTRACT WITH THE GOVERNMENT
 UNDER WHICH THIS DRAWING IS DELIVERED.

A

GTE AUTOMATIC ELECTRIC

NORTHLAKE, ILLINOIS 60164

59

DRAWING STOCK LIST

AMOUNT	U/M	PART NUMBER				ITEM	G/P	DESCRIPTION
		PFX	BASE	SUFFIX	ISSUE			
1.0	PC	D	735420	A		147		SPG ASSM
6.0	PC	D	75321	A		148		BUSHING
6.0	PC	D	7700	A		151		NUT HEX 8-32X5/16
4.0	PC	D	7701	A		152		NUT HEX 6-32X5/16
2.0	PC	D	760790	A		157		WHIMS 8-32X5/16
22.0	PC	D	761072	A		158		SCR&BUSH ASSY
2.0	PC	D	760642	A		159		WHIMS 8-32X9/32
1.0	PC	D	83076	A		167		CAM
1.0	PC	NP	1	F8		172		SPG ASM-NORM POST
3.0	PC	D	19348	A		175		STUD
1.0	PC	D	762150	A		184		BDGHSLT SMS.138-32X1/8
3.0	PC	D	762047	C		187		PHSLT SMS .138-32X1/4
3.0	PC	D	762047	D		188		PHSLT SMS .138-32X5/16
2.0	PC	D	761101	C		192		RH SLT SMS.138-32X11/16
1.0	PC	D	762047	Y		195		PHSLT SMS .138-32X3
1.0	PC	D	762047	F		196		PHSLT SMS .138-32X7/16
3.0	PC	D	762047	BK		197		PHSLT SMS .138-32X2-1/8
2.0	PC	D	762047	P		*198		PHSLT SMS .138-32X1-1/4
1.0	PC	D	812369	A		214		RLY-28
1.0	PC	GR	60406	A1		215	2	RLY-HORIZ
1.0	PC	GR	60407	A1		216	2	RLY HORIZ
1.0	PC	GR	6177	A9		217		RELAY-HORIZONTAL
1.0	PC	GR	50010	A1A		218		RELAY
1.0	PC	GR	6495	A7		219		RELAY
1.0	PC	GR	5124	A8A		220		RELAY
1.0	PC	GR	1599	C1		221		RLY-HORIZ
1.0	PC	GR	5056	F3		222		RELAY
1.0	PC	GR	60249	A2		223		RLY-HORIZ
1.0	PC	GR	60094	A2		224		RLY-HORIZ
1.0	PC	GR	9680	A1		225	2	RLY HORIZ
1.0	PC	GR	6440	A4		226	2	RLY-HORIZ
1.0	PC	D	150005	F		227		STRIP-TERMINAL
1.0	PC	D	762047	R		228		PHSLT SMS .138-32X1-1/2

01/09/75 DATE	SHEET TOTAL 2 OF 2	DESCRIPTION CONNECTOR	PART NUMBER			ISSUE
			PFX	BASE	SUFFIX	
			DH	580370	B30A	013

CONFIDENTIAL - NOT FOR PUBLICATION
THIS DRAWING IS THE PROPERTY OF GTE AUTOMATIC ELECTRIC INCORPORATED. ITS USE IS CONDITIONED UPON THE USER'S AGREEMENT NOT TO COPY OR REPRODUCE THE DRAWING IN WHOLE OR IN PART, OR TO USE THE DRAWING TO REPRODUCE THE MATERIAL DESCRIBED THEREIN, OR FOR ANY OTHER PURPOSE, WITHOUT WRITTEN PERMISSION FROM GTE AUTOMATIC ELECTRIC INCORPORATED. THIS NOTICE DOES NOT APPLY TO THE U.S. GOVERNMENT TO THE EXTENT THAT IT IS INCONSISTENT WITH ANY CONTRACT WITH THE GOVERNMENT UNDER WHICH THIS DRAWING IS DELIVERED.

A

GTE AUTOMATIC ELECTRIC

NORTHLAKE, ILLINOIS 60164

DRAWING STOCK LIST

AMOUNT	U/M	PART NUMBER				ITEM	G/P	DESCRIPTION
		PFX	BASE	SUFFIX	ISSUE			
1.0	PC	D	21974	6		43	COMMON PARTS STKL	
1.0	PC	D	1724	A		44	WHR-PLAIN .149X.312X.032	
15.0	PC	D	1742	A		45	WHR-PLAIN .173X.438X.032	
3.0	PC	D	1725	A		46	WASHER 6	
1.0	PC	D	17563	A		53	WHR-3 HOLE .532C-C X.032	
1.0	PC	D	281117	A		57	RESISTOR 100 NI 1W	
1.0	PC	D	281119	A		58	RESISTOR 200 NI 1W	
1.0	PC	D	281124	A		59	RESISTOR 500 NI 1W	
2.0	PC	D	281126	A		60	RESISTOR 1K NI 1W	
1.0	PC	D	283059	A		61	RESISTOR 1500 NI	
1.0	PC	D	281132	A		62	RESISTOR 2K NI 1W	
2.0	PC	D	281135	A		63	RESISTOR 3K NI 1W	
1.0	PC	D	281137	A		64	RESISTOR 5K NI 1W	
1.0	PC	D	281410	A		65	RESISTOR 200, .2 W -1-	
1.0	PC	D	281860	A		66	RESISTOR 10K NI 1 W	
1.0	PC	D	284088	A7		67	RES 100 10% 25W	
1.0	PC	D	284076	A16		68	RESISTOR 1K, 5 W	
1.0	PC	D	320298	A		77	BUSYING KEY ASSY	
20.0	PC	FD	1029	DG		78	DIODE	
1.0	PC	FD	1029	AF		79	THERMISTOR	
2.0	PC	D	150005	A		81	STRIP-TERMINAL	
1.0	PC	D	36087	A		82	POST-NORMAL	
2.0	PC	D	41473	A		84	COLLAR WIPER	
2.0	PC	D	41097	A		86	BANK ROD	
2.0	PC	D	41149	A		87	COLLAR	
1.0	PC	D	42725	C		90	JACK SW-24 PT	
1.0	PC	D	42326	A		92	JACK-TEST	
2.0	PC	D	44410	A		93	INSULATOR	
12.0	PC	D	44469	A		94	INSULATOR	
1.0	PC	D	440253	A		96	INSULATOR	
1.0	PC	D	44864	A		97	INSULATOR	
1.0	PC	D	440301	A		98	INSULATOR	
2.0	PC	D	46622	A		103	WIPER-QUICK CH	
1.0	PC	D	46766	A		105	SWITCH SHAFT ASSY	
1.0	PC	D	470400	B		106	BASE	
1.0	PC	D	490025	W		107	COVER	
2.0	PC	D	3690	A		109	POST-GUIDE	
2.0	PC	D	3691	A		110	POST-GUIDE	
4.0	PC	D	542281	A		114	CORD-WIPER	
2.0	PC	D	68762	A		121	CAPACITOR 2.15MF	
1.0	PC	D	68562	A		122	CAPACITOR 1&1MF	
1.0	PC	D	68820	AH		*123	CAP .005 MF +40 -0 600 V	
1.0	PC	D	68274	A		124	CAPACITOR .04MF	
1.0	PC	D	68758	DT		125	CAP 100MF +75-10 7	
1.0	PC	D	71194	A		133	ARMATURE	
1.0	PC	D	71250	A		134	ARMATURE-ROTARY	
1.0	PC	D	732023	A		136	RLS MAG & BRKT ASSY	
1.0	PC	D	731855	B		139	BRKT-ASSY	
1.0	PC	D	731449	M		142	CLAMP	

01/09/75 DATE	SHEET TOTAL	DESCRIPTION	PART NUMBER			ISSUE
			PFX	BASE	SUFFIX	
1-23-75	1 OF 2	CONNECTOR	DH	580370	B31A	017

CONFIDENTIAL - NOT FOR PUBLICATION
 THIS DRAWING IS THE PROPERTY OF GTE AUTOMATIC ELECTRIC INCORPORATED. ITS USE IS
 CONDITIONED UPON THE USER'S AGREEMENT NOT TO COPY OR REPRODUCE THE DRAWING
 IN WHOLE OR IN PART, OR TO USE THE DRAWING TO REPRODUCE THE MATERIAL DESCRIBED
 THEREIN, OR FOR ANY OTHER PURPOSE, WITHOUT WRITTEN PERMISSION FROM GTE AUTO-
 MATIC ELECTRIC INCORPORATED. THIS NOTICE DOES NOT APPLY TO THE U.S. GOVERNMENT
 TO THE EXTENT THAT IT IS INCONSISTENT WITH ANY CONTRACT WITH THE GOVERNMENT
 UNDER WHICH THIS DRAWING IS DELIVERED.

A

GTE AUTOMATIC ELECTRIC

NORTHLAKE, ILLINOIS 60164

50
7

DRAWING STOCK LIST

AMOUNT	U/M	PART NUMBER				ITEM	G/P	DESCRIPTION
		PFX	BASE	SUFFIX	ISSUE			
1.0	PC	D	735424	A		143		BRKT-ROT INT SPG
1.0	PC	NP	5	A6		145		ROT OFF NORMAL SPG ASSY
1.0	PC	D	735105	A		146		ARM SPRING COMB
1.0	PC	D	735420	A		147		SPG ASSM
7.0	PC	D	75321	A		148		BUSHING
7.0	PC	D	7700	A		151		NUT HEX 8-32X5/16
4.0	PC	D	7701	A		152		NUT HEX 6-32X5/16
2.0	PC	D	760790	A		157		WHIMS 8-32X5/16
21.0	PC	D	761072	A		158		SCR&BUSH ASSY
3.0	PC	D	760642	A		159		WHIMS 8-32X9/32
1.0	PC	D	731518	A		160		BRACKET-RELAY
1.0	PC	D	83076	A		167		CAM
1.0	PC	NP	1	H2		172		NORMAL POST SPGS
1.0	PC	H	4508	18		173		STUD-138-32X31/2
1.0	PC	D	19346	A		174		STUD
2.0	PC	D	19348	A		175		STUD
5.0	PC	D	762047	C		187		PHSLT SMS .138-32X1/4
3.0	PC	D	762047	D		188		PHSLT SMS .138-32X5/16
2.0	PC	D	761101	C		192		RH SLT SMS.138-32X11/16
2.0	PC	D	762047	P		*193		PHSLT SMS .138-32X1-1/4
1.0	PC	D	762047	Y		194		PHSLT SMS .138-32X3
3.0	PC	D	762047	BK		197		PHSLT SMS .138-32X2-1/8
1.0	PC	D	762047	G		198		PHSLT SMS .138-32X1/2
2.0	PC	D	762046	D		199		PHSLT SMS .125-40X5/16
1.0	PC	GR	6177	A9		215		RELAY-HORIZONTAL
1.0	PC	GR	50010	A1A		216		RELAY
1.0	PC	GR	6495	A7		217		RELAY
1.0	PC	GR	5124	A8A		218		RELAY
1.0	PC	GR	1599	C1		219		RLY-HORIZ
1.0	PC	GR	5056	F3		220		RELAY
1.0	PC	GR	60249	A2		221		RLY-HORIZ
1.0	PC	GR	60094	A2		222		RLY-HORIZ
1.0	PC	GR	60406	A1		223	2	RLY-HORIZ
1.0	PC	GR	60407	A1		224	2	RLY HORIZ
1.0	PC	GR	9680	A1		225	2	RLY HORIZ
1.0	PC	GR	6440	A4		226	2	RLY-HORIZ
1.0	PC	GT	26021	B1 2A		227		RLY-58A
1.0	PC	D	812369	A		228		RLY-28
2.0	PC	D	150005	F		229		STRIP-TERMINAL

01/09/75 DATE	SHEET TOTAL 2 OF 2	DESCRIPTION CONNECTOR	PART NUMBER			ISSUE
			PFX	BASE	SUFFIX	
			DH	580370	B31A	017

CONFIDENTIAL - NOT FOR PUBLICATION
 THIS DRAWING IS THE PROPERTY OF GTE AUTOMATIC ELECTRIC INCORPORATED. ITS USE IS
 CONDITIONED UPON THE USER'S AGREEMENT NOT TO COPY OR REPRODUCE THE DRAWING
 IN WHOLE OR IN PART, OR TO USE THE DRAWING TO REPRODUCE THE MATERIAL DESCRIBED
 THEREIN, OR FOR ANY OTHER PURPOSE, WITHOUT WRITTEN PERMISSION FROM GTE AUTO-
 MATIC ELECTRIC INCORPORATED. THIS NOTICE DOES NOT APPLY TO THE U.S. GOVERNMENT
 TO THE EXTENT THAT IT IS INCONSISTENT WITH ANY CONTRACT WITH THE GOVERNMENT
 UNDER WHICH THIS DRAWING IS DELIVERED.

A

GTE AUTOMATIC ELECTRIC

NORTHLAKE, ILLINOIS 60164